



**UNITED  
TECHNOLOGIES  
CARRIER**

Commercial Division  
Carrier Corporation

BULLETIN: CA-SB-19-E-75-75  
DATE: 9/5/75  
PAGE: 1 OF: 2

## SERVICE BULLETIN

SUBJECT:

19EA BEARING HOUSING AND THRUST SHOE DESIGN CHANGE

SUPERSEDE  
BULLETIN:

DATE:  
PAGE: OF:

Installation, repair and service and equipment referenced in this Service Bulletin should be undertaken only by qualified persons. Carrier Corporation (1) makes no representations or warranties, expressed or implied, concerning the accuracy, completeness or right to use the information contained herein, and (2) disclaims all liability for injuries, damages, infringements and other losses which may arise on account of, or which may result from, the use or application of any information, method or apparatus disclosed herein.

### PURPOSE

To advise of a change in bearing housing and thrust shoe design.

### MACHINES AFFECTED

19EA4 machines shipped after October 1973. The approximate compressor serial number cutoff is 101216.

### PROCEDURE

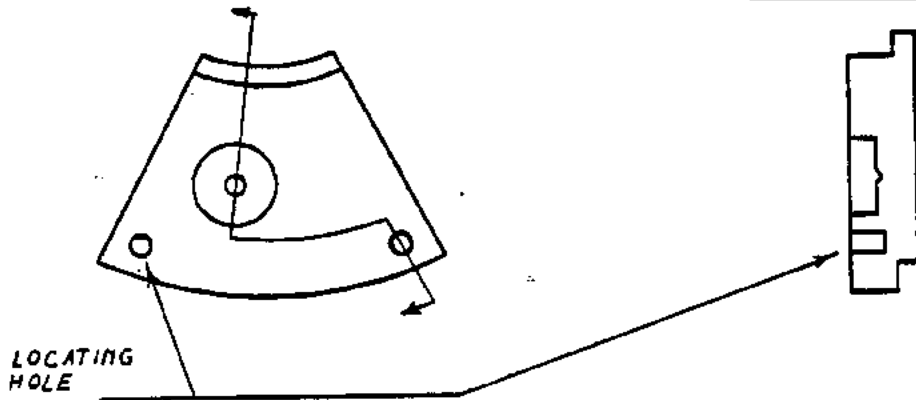
Early design high speed bearing housings used 3/32" locating pins to hold the thrust shoes in position. The locating pins were increased to 3/16" in machines shipped after October 1973.

Only the new style housing will be available from the Parts Center.

The thrust shoes used with each of these bearing housings are not interchangeable. Figure 1 shows the early design, locating hole positioning, part number, and the corresponding bearing housing part number. Figure 2 gives the same information for the current design.

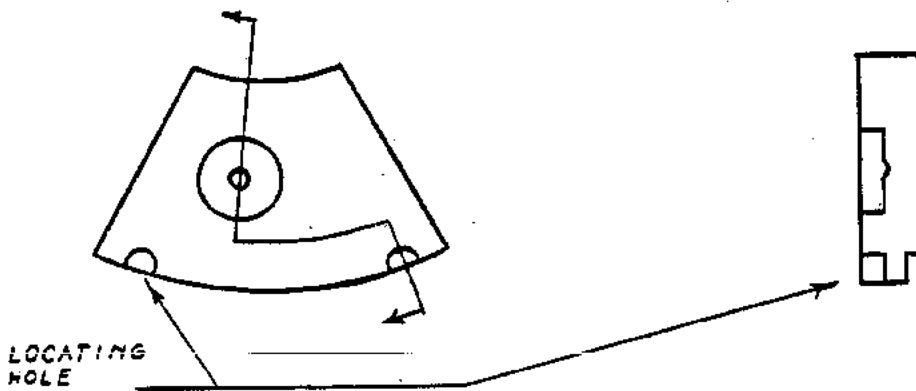
**SERVICE BULLETIN**

SUPERSEDE  
BULLETIN:  
DATE:  
PAGE: OF:



Part No. 19DA33-203 (6 Piece Set)  
Bearing Housing Part No. 19EA42-383

Fig. 1. Old Style 19EA4 Thrust Shoe



Part No. 19EA41-216 (6 Piece Set)  
Bearing Housing Part No. 19EA42-407

Fig. 2. New Style 19EA4 Thrust Shoe