



**UNITED  
TECHNOLOGIES  
CARRIER**

Commercial Division  
Carrier Corporation

BULLETIN: CA-SB-17-76-28  
DATE: 1/27/76  
PAGE: 1 OF 2

## SERVICE BULLETIN

SUBJECT: WORM LOCKNUT THREAD

SUPERSEDE  
BULLETIN:  
DATE:  
PAGE: OF:

Installation, repair and service and equipment referenced in this Service Bulletin should be undertaken only by qualified persons. Carrier Corporation (1) makes no representations or warranties, expressed or implied, concerning the accuracy, completeness or right to use the information contained herein, and (2) disclaims all liability for injuries, damages, infringements and other losses which may arise on account of, or which may result from, the use or application of any information, method or apparatus disclosed herein.

### PURPOSE

To advise of a change that affects the servicing of a 17MA, PA, SA 30 and 40 compressor.

### MACHINES AFFECTED

17MA, PA, SA 30 and 40 compressors.

### BACKGROUND

17MA, PA, SA 30 and 40 compressors have a left-hand thread worm locknut. This is the nut (see diagram) that secures the oil pump drive worm and the thrust disk to the impeller shaft.

Current 17M,P,S 30 compressors and 17M,P,S 40 compressors built prior to the introduction of the MA, PA, and SA models have right-hand thread worm locknuts.

### PROCEDURE

To remove the worm locknut from 17MA, PA, SA 30 and 40 compressors, turn the nut clockwise as seen from the thrust end of the compressor.



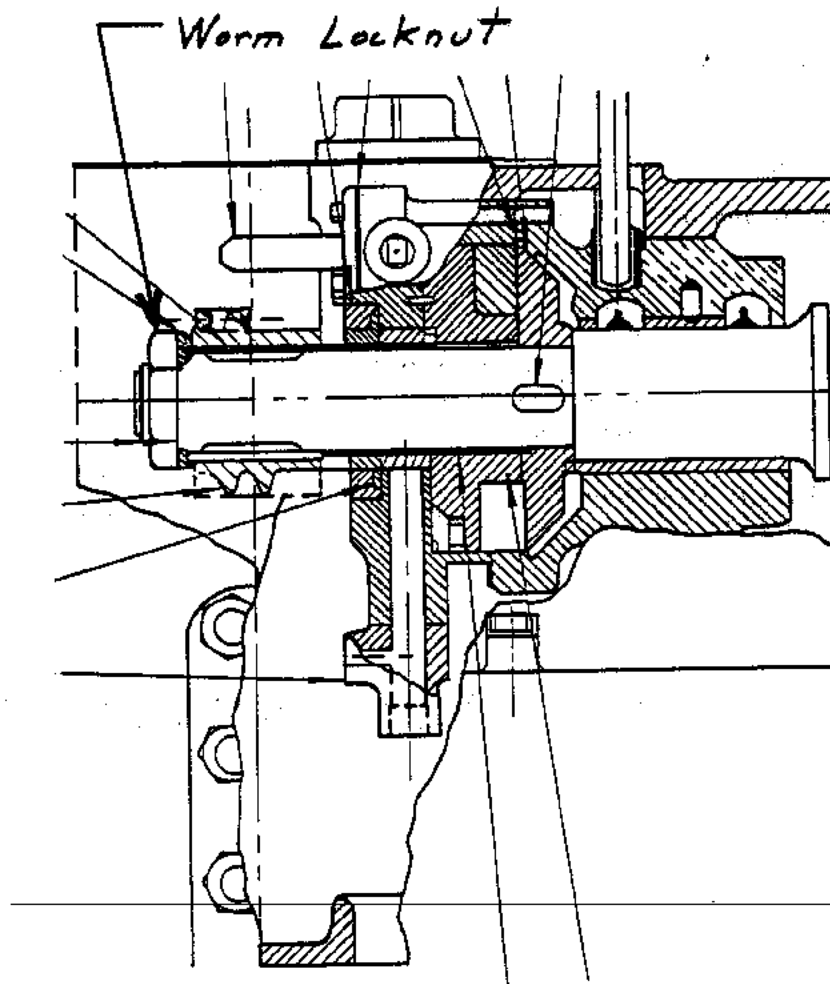
**UNITED  
TECHNOLOGIES  
CARRIER**

Commercial Division  
Carrier Corporation

BULLETIN: CA-SB-17-76-28  
DATE: 1/27/76  
PAGE: 2 OF 2

## SERVICE BULLETIN

SUPERSEDE  
BULLETIN:  
DATE:  
PAGE: OF:



THRUST END BEARING CHAMBER ASSEMBLY