



**UNITED
TECHNOLOGIES
CARRIER**

Commercial Division
Carrier Corporation

BULLETIN: CA-SB-19-E-76-80

DATE: 5/3/76

PAGE: 1 OF: 6

SERVICE BULLETIN

SUBJECT:

PREWHIRL BLADE DESIGN CHANGE

SUPERSEDE
BULLETIN:

DATE:

PAGE: OF:

Installation, repair and service and equipment referenced in this Service Bulletin should be undertaken only by qualified persons. Carrier Corporation (1) makes no representations or warranties, expressed or implied, concerning the accuracy, completeness or right to use the information contained herein, and (2) disclaims all liability for injuries, damages, infringements and other losses which may arise on account of, or which may result from, the use or application of any information, method or apparatus disclosed herein.

PURPOSE: To inform the field of the current use and availability of a more effective method to secure the pulley to the prewhirl blade.

MACHINES 19FA, 19EA machines shipped after December 1, 1975.

AFFECTED:

Approximate Serial No. Cutoffs:

1. Machine Assembly: 24,150 and above.
2. Compressor Assembly: 101988 and above.

PARTS

Blade Ring Assembly

INVOLVED:

Prewhirl Blade and Pulley

Drive Pulley

Drive Shaft

PROCEDURE: Differences between the old and new designs are shown on the attached drawings. Should replacement of the guide vane assembly or its individual parts become necessary, the following information and Table 1, page 2, must be considered:

1. Only the new blade ring assembly will be available from PSD.
(A new drive shaft must be ordered when a new blade ring assembly is used.)
2. Only the new prewhirl blade and its pulley, will be available from PSD. Each new prewhirl blade will be packaged with the correct pulley, bolt, and washer as shown in the drawing.
3. New and old prewhirl blade and pulley assemblies may be used in a common blade ring assembly. It is recommended, however, that if one requires changing, all be changed to the new design.



**UNITED
TECHNOLOGIES
CARRIER**

Commercial Division
Carrier Corporation

BULLETIN: CA-SB-19-E-76-80
DATE: 5/3/76
PAGE: 2 OF: 6

SERVICE BULLETIN

SUPERSEDE
BULLETIN:
DATE:
PAGE: OF:

Table 1. Blade Ring Assembly Service Part Numbers

	<u>Part Numbers</u>	
	<u>4-Size Compressor</u>	<u>5-Size Compressor</u>
<u>Old Design Parts</u>		
Prewirl Blade	No Longer Available	
Blade Pulley	"	"
Drive Pulley	"	"
Drive Shaft	19EA42-1052	17FA502-1772
<u>New Design Parts</u>		
Prewirl Blade (Package Part Number. Includes pulley, bolt, and washer.)	19EA660016	19EA660017
Blade Pulley	19EA41-2142	19EA51-2142
Drive Pulley (Requires new drive shaft.)	19EA41-1003	19EA51-1003
Drive Shaft	19EA43-1052	19EA53-1052

NOTE: All other parts used on blade ring assemblies are interchangeable.



**UNITED
TECHNOLOGIES
CARRIER**

Commercial Division
Carrier Corporation

BULLETIN: CA-SB-19-E-76-80
DATE: 5/3/76
PAGE: 3 OF: 6

SERVICE BULLETIN

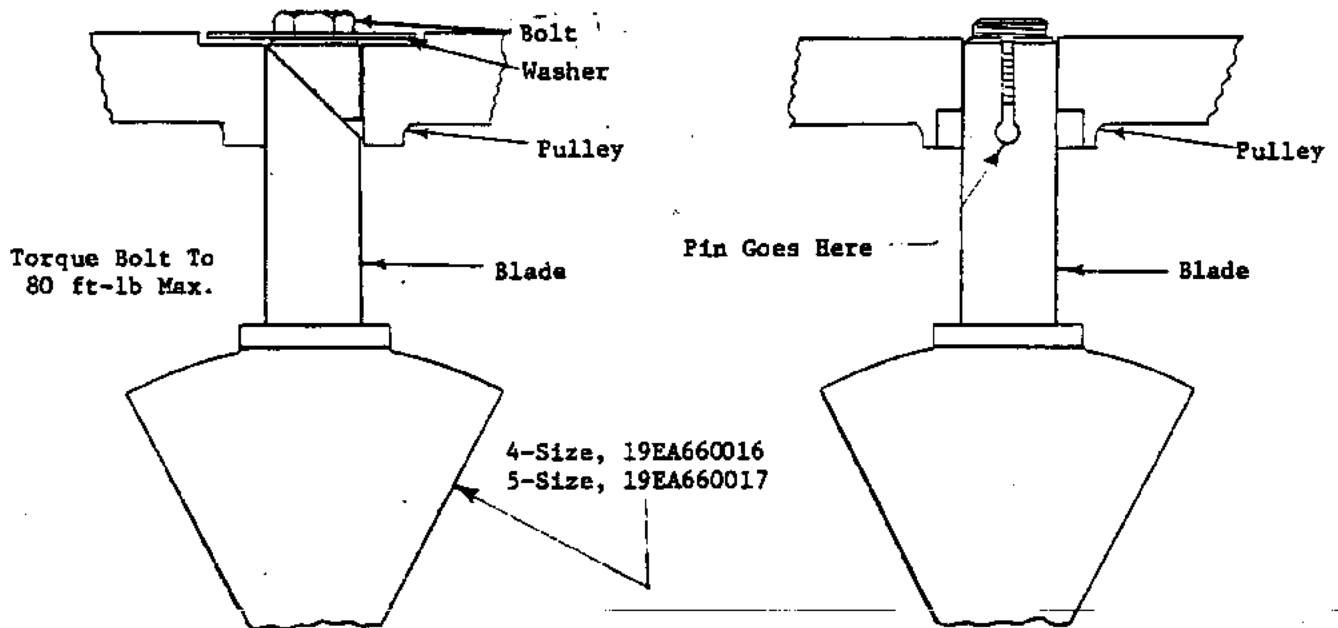
SUPERSEDE
BULLETIN:
DATE:
PAGE: OF:

INDIVIDUAL PARTS COMPARISON BETWEEN NEW AND OLD
DESIGN BLADE RING ASSEMBLY

NEW DESIGN

OLD DESIGN

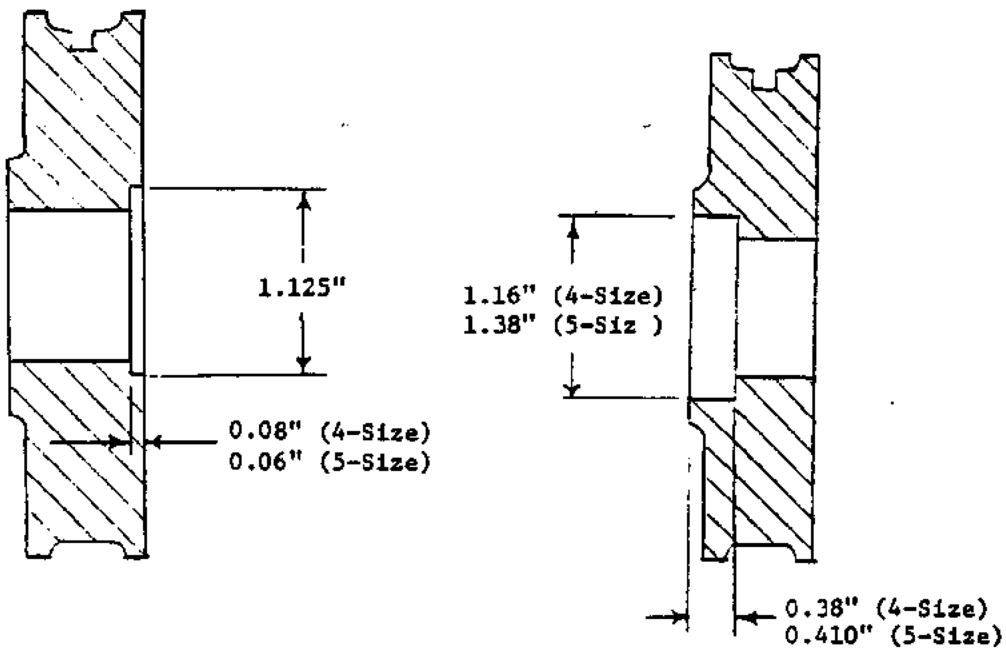
PREWHIRL BLADE AND PULLEY



SERVICE BULLETIN

SUPERSEDE
BULLETIN:
DATE:
PAGE: OF:

PULLEY DIMENSIONAL DIFFERENCES





**UNITED
TECHNOLOGIES
CARRIER**

Commercial Division
Carrier Corporation

BULLETIN: CA-SB-19-E-76-80
DATE: 5/3/76
PAGE: 5 OF: 6

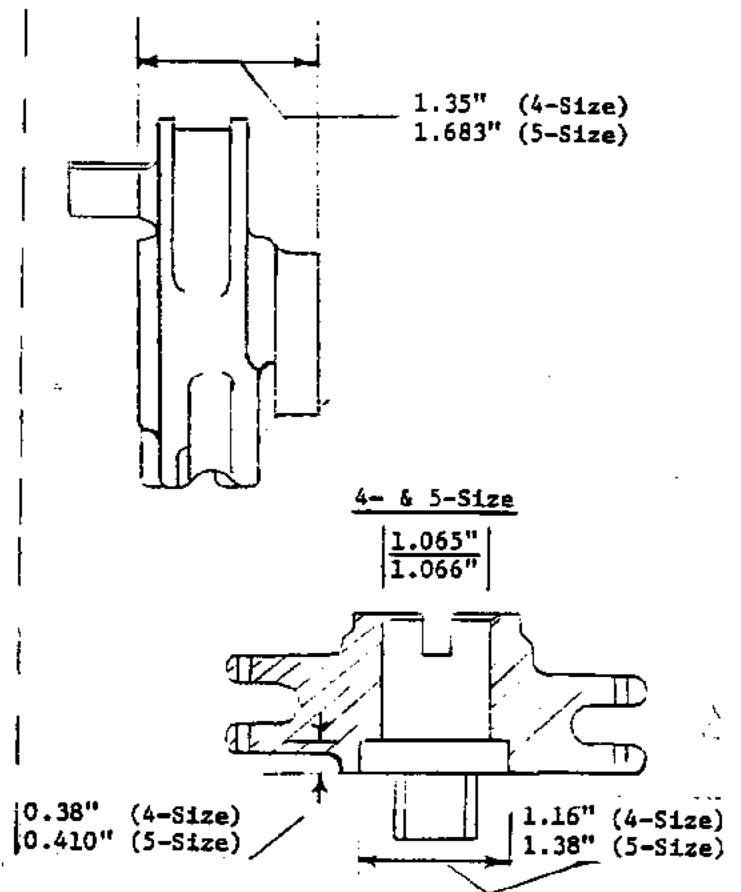
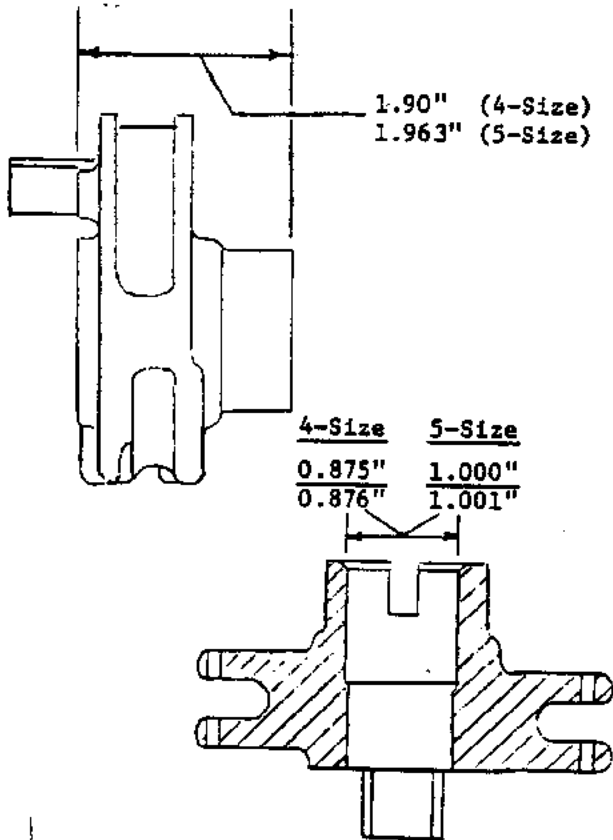
SERVICE BULLETIN

SUPERSEDE
BULLETIN:
DATE:
PAGE: OF:

NEW DESIGN

DRIVE PULLEY

OLD DESIGN



SERVICE BULLETIN

SUPERSEDE
BULLETIN:
DATE:
PAGE: OF:

