



SERVICE BULLETIN

Title: 19XL Compressor Handling Method
Models Affected: 19XL

Number: C9305
Date: 3/2/93
Supersedes:
Date:

Purpose:

To advise the field of the proper way to support a 19XL compressor when it is removed from the cooler.

File: Compressor-Motor Assembly

Prepared By: Don Berdan

Approved By: Alan Johnson

This document and the material contained herein are the property of Carrier Corporation and may not be copied, reproduced, or released without written permission of Carrier Corporation.

Findings:

When an entire 19XL compressor is removed from the cooler shell, it will tip back towards the motor because of the weight distribution. Because the compressor does not stand upright by itself, questions have arisen as to how to handle a separate compressor.

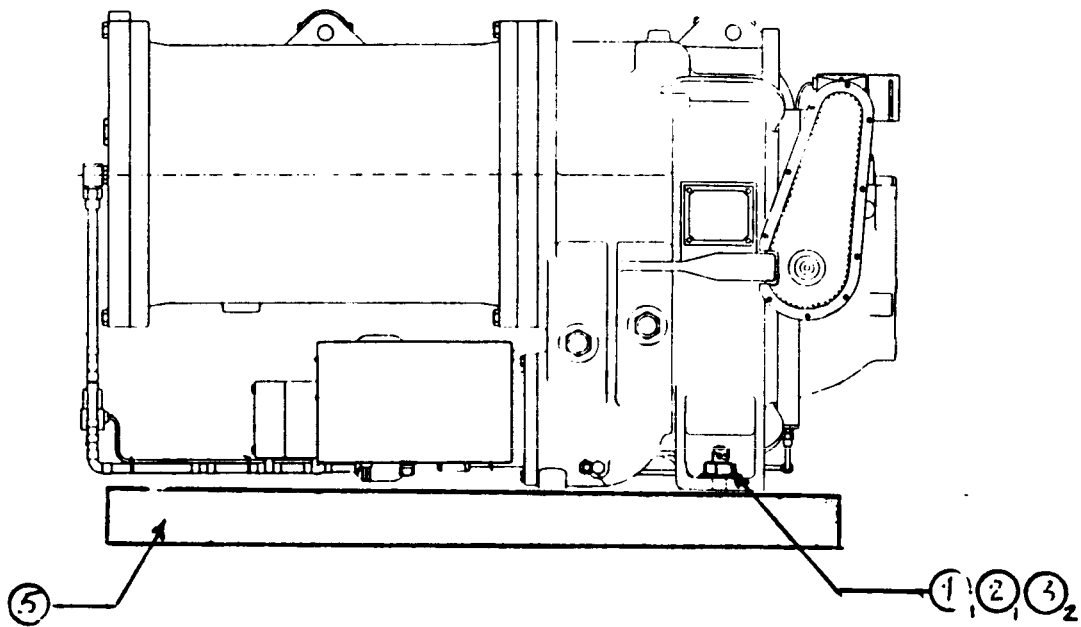
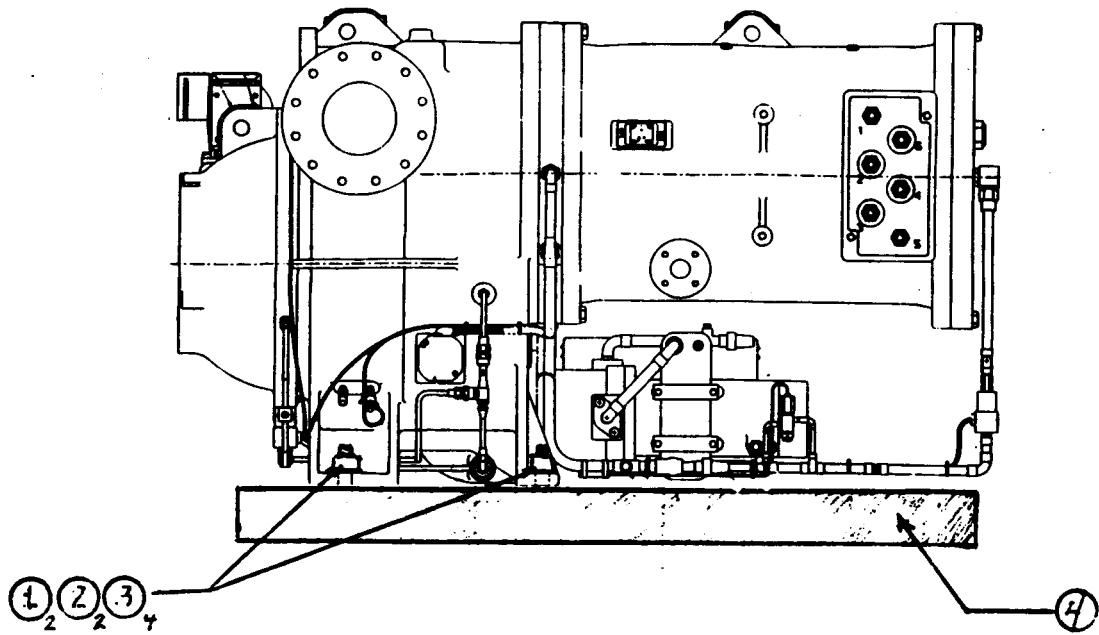
The compressor is sometimes removed when rigging the machine at job site installations. In other cases, the compressor must be removed at the rigger's yard, and transported to the job site.

Recommendations:

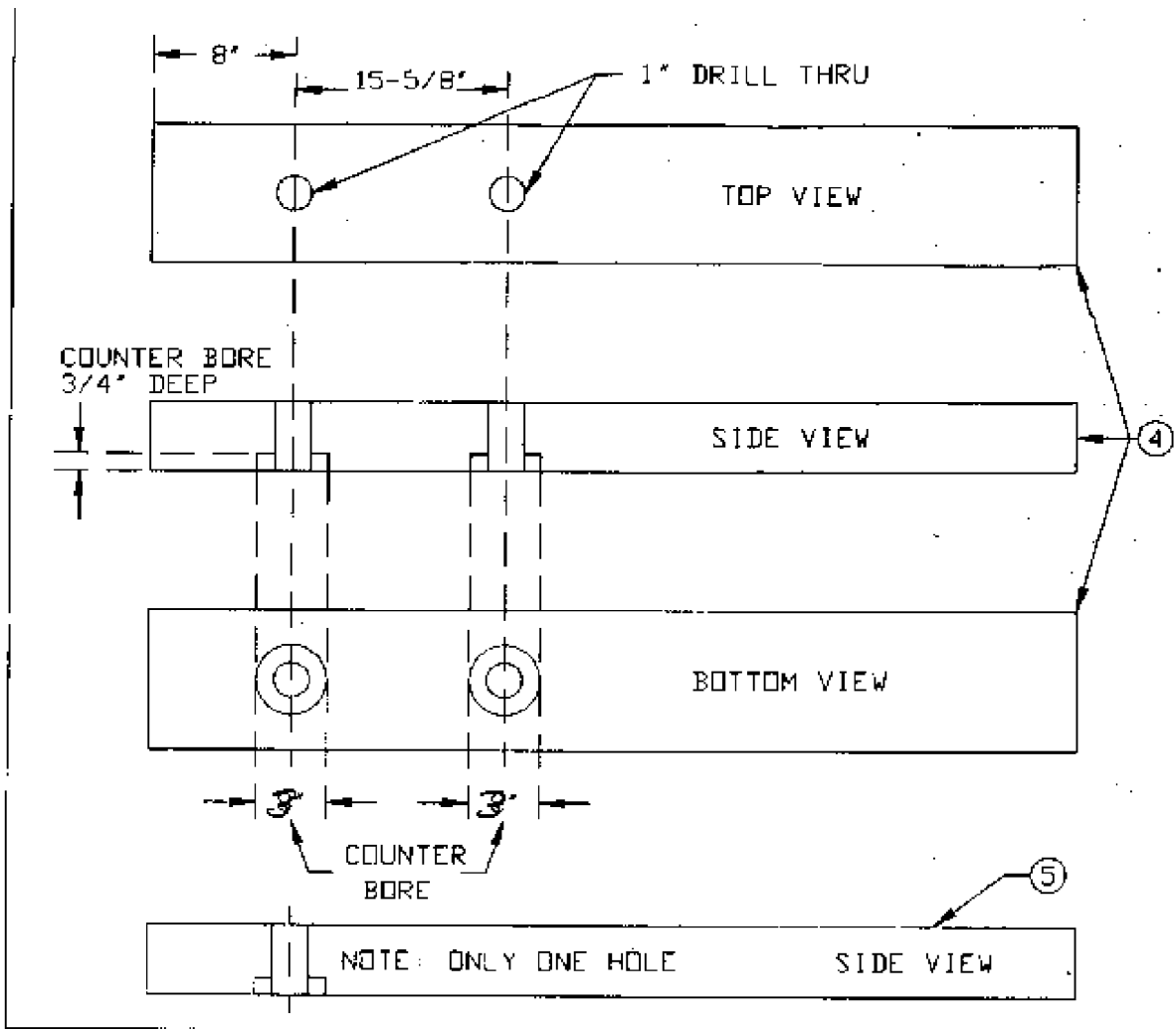
Two pieces of 4" x 6" lumber, 5 feet long (1.5 meters), can be used as a base for the compressor (See attached drawing, Fig. A). Drill two 1 inch holes into one board, and one 1 inch hole in the other board. One side of the bolt hole should be countersunk for the bolt head and the washer. Using three 3/4 - 10 x 6" lg. hex head bolts with nuts and washers, bolt the compressor base to the two boards. The compressor is now stable for transportation, and the oil piping is raised so that the possibility of damage is less. Any compressor openings should be covered when transporting.

***On Next Page:**

- 19XL Shipping Boards and Materials List
- 19XL Shipping Method



ITEM	DESCRIPTION	MATERIAL	QTY
1	HEX HEAD CAP BOLT	3/4 " - 10 x 6 " LG	3
2	HEX NUT	3/4 " - 10	3
3	PLAIN WASHER	3/4 " NOM SIZE	6
4	SHIPPING BOARD, COMPRESSOR DISCH SIDE	4 " X 6 " X 5 ' WOOD	1
5	SHIPPING BOARD, OIL PUMP SIDE	4 " X 6 " X 5 ' WOOD	1



ITEM	DESCRIPTION	MATERIAL	QTY
1	HEX HEAD CAP BOLT	3/4" - 10 x 6" LG	3
2	HEX NUT	3/4" - 10	3
3	PLAIN WASHER	3/4" NOM SIZE	6
4	SHIPPING BOARD, COMPRESSOR DISCH SIDE	4" X 6" X 5' WOOD	1
5	SHIPPING BOARD, OIL PUMP SIDE	4" X 6" X 5' WOOD	1
PROPOSITION No.	SUBJECT		PREPARED BY
JOB No.	19XL SHIPPING BOARDS AND MATERIAL LIST		BY DWB
		CHECKED BY	SHEET No. 1
			DATE 2/18/93