

ARRANGEMENT NUMBER 布置号	PART QUALIFIER 范围	LF2 VFD LF2变频器	CONDENSER CODE 冷凝器代码	COMPRESSOR FRAME SIZE 压缩机	CLADDING 涂层	WEIGHT (LBS) 重量 (KG)
19XV04005801	LF2 4CC HX8L C5	4CC SEE DRAWING 19XV04006501	85-87	5	NO	3834 [1739]
19XV04005802	LF2 4CC HX8S C5		80-82	5		3773 [1711]
19XV04005803	LF2 4CC HX7L C5		75-77	5		3849 [1746]
19XV04005804	LF2 4CC HX7S C5		70-72	5		3788 [1718]
19XV04005805	LF2 4CC HX7S C4		70-72	4		3743 [1697]
19XV04005806	LF2 4CC HX8L C5		85-87	5		3812 [1729]
19XV04005807	LF2 4CC HX8S C5		80-82	5		3751 [1701]
19XV04005808	LF2 4CC HX7L C5		75-77	5		3826 [1735]
19XV04005809	LF2 4CC HX7S C5		70-72	5		3766 [1708]
19XV04005810	LF2 4CC HX7S C4		70-72	4		3722 [1688]
19XV04005811	LF2 4AA HX7S C4	4AA SEE DRAWING 19XV04006501	70-72	4	NO	3743 [1697]
19XV04005812	LF2 4AA HX7S C4		70-72	4	YES	3722 [1688]

NOTES:

GENERAL REQUIREMENTS:

- MAKE ELECTRICAL TERMINATIONS PER ENGINEERING REQUIREMENT B-033 (ITEM #22).
- TIGHTEN BOLTS PER ENGINEERING REQUIREMENT B-293 OR Z-349 (ITEM #23).
- AFTER ASSEMBLY IS COMPLETE, CLEAN PER ENGINEERING REQUIREMENT B-132 (ITEM #41).

MOTOR TERMINALS:

- STUDS (ITEM #16) TO BE INSTALLED INTO TAPPED HOLES USING THE SHORT THREADED END (15/16" LG. END), DRIVE STUDS TO A DEPTH OF 25/32" +0", -.06". DO NOT EXCEED 120 FT-LBS OF TORQUE.
- ADHESIVE (ITEM #18) TO BE APPLIED TO AREAS OF CONTACT BETWEEN MOTOR SHELL AND THE INSULATION SURFACE OF ITEM #40.

VFD CABINET MOUNTING:

- THE VFD CABINET MAY BE ADJUSTED HORIZONTALLY IN ITS MOUNTING TO BETTER ACCOMODATE THE ENCLOSURE ASSEMBLY (ITEM #12). MAINTAIN A MINIMUM OF 2.50" FROM TUBE SHEET AS SHOWN IN SECTION N-N ON SHEET #4 ON ALL ASSEMBLIES (EXCEPT 19XR04005801).

REFRIGERANT CONNECTIONS:

- INSTALL O-RINGS USING SILICONE GREASE (ITEM #35). TIGHTEN USING TWO WRENCHES. RECOMMENDED TORQUE IS 325-400 IN-LBS.

CABLE CONNECTIONS:

- CUT FOAM TUBING (ITEM #9) INTO SIX, 8" LENGTHS FOR ASSEMBLY TO (6) POWER LEADS. SLIDE FOAM TUBING (ITEM #9) AND HEAT SHRINK TUBING (ITEM #10) ONTO POWER LEADS.
- TO ASSEMBLE MOTOR POWER CABLES, IDENTIFIED AS T1 THRU T6, POSITION MOTOR END LUG ON TERMINAL STUDS WITH BELLEVILLE WASHER (ITEM #21) LOCATED AGAINST THE FRONT OF TERMINAL LUG WITH DOME SIDE FACING TOWARD FRONT TERMINAL NUT. WHILE HOLDING REAR TERMINAL NUT STATIONARY, TORQUE DOWN FRONT TERMINAL NUT UNTIL WASHER IS FLAT AND DOME PORTION IS NOT RECOGNIZABLE (45-50 FT-LB). LOCATE HEAT SHRINK TUBING (ITEM #10) OVER POWER CONNECTIONS SO THAT THEY ARE COMPLETELY COVERED AND TUBING IS AGAINST MOTOR HOUSING. SHRINK INTO POSITION. SLIDE FOAM TUBING (ITEM #9) PART WAY OVER THE HEAT SHRUNK TUBING - APPLY ADHESIVE (ITEM #18) TO MOTOR SIDE END OF THE FOAM TUBING AND PUSH TUBING THE REST OF THE WAY OVER THE TERMINAL AND AGAINST THE SHEET INSULATION ON THE MOTOR SIDE. SECURE OPPOSITE END OF THE FOAM TUBING WITH A WIRE TIE (ITEM #7) AS SHOWN. RECHECK ALL TERMINAL CONNECTIONS FOR PROPER INSTALLATION.
- ORIENT POWER CABLE CONNECTORS ON "GND" AND "W" BUSBARS IN SUCH A WAY THAT THE MAXIMUM POSSIBLE AIR GAP BETWEEN BUSBARS AND ASSOCIATED POWER CABLE CONNECTORS IS MAINTAINED AS SHOWN IN VIEW K-K AND SECTION M-M ON SHEET #9.

11. ASSEMBLE FRAME, BACK PANNEL, FLOOR AND TRAY TO COMPRESSOR AND VFD PRIOR TO ASSEMBLING POWER LEADS (ITEM #29). COMPLETE ASSEMBLY OF ENCLOSURE AFTER ALL POWER LEADS ARE ASSEMBLED.

12. THE POWER CABLE ENCLOSURE CONSTRUCTION MUST BE ADJUSTED TO FULLY COVER THE OPENING ON THE VFD CABINET.

13. REMOVE THE VFD LIFTING BRAKETS AND FASTEN TO THE RAIL ASY USING BOLTS NUTS AND WASHER (ITEMS 43,44,46) BEFORE SHIPMENT.

14. REPLACE THE BOLTS IN TAPPED HOLES AT TOP OF THE VFD AFTER REMOVING THE LIFTING BRACKETS.

15. LOOSELY SECURE THE BRACKET TO TUBESHEETS BEFORE RAILS ARE ASSEMBLED TO BRACKETS AND THEN TORQUE BRACKET BOLTS.

技术要求:

总体要求:

- 电气端子制作根据工程要求B-033(部件22)。
- 按照工程要求B-293或者Z-349 拧紧螺(部件23)。
- 安装完成后,按照工程要求B-132清洁(部件41)。

电机端子:

- 安装螺栓时扭矩不应超过120 FT-LBS。
- 在电机外壳和绝缘层之间应用胶水粘合。

变频柜的固定:

- 水平调整VFD变频柜的固定位置以便接线罩易于安装。



冷却管路连接:

- 安装O环时要用硅油,用两把扳手拧紧管路的路口。

电缆连接:

- 把泡沫管切成6段,分别套在6根电缆引线上并包上热缩套。
- 电机电缆线分别用T1到T6标实。
- 适当调整电缆间的距离以保证足够的空气间隙,见视图K-K及剖面M-M。
- 在装电力引线之前首先要安装VFD启动柜和压缩机之间的罩壳的框架、侧板和底部托板;在所有电缆安装结束后,完成整个罩壳的安装。
- 电缆罩壳可根据需要适当调整,确保完全覆盖启动柜上开孔处。
- 在装运前移去VFD启动柜上的起吊支架,并把该支架用螺栓螺母固定在轨道组件上。
- 在移去起吊支架后,启动柜顶部重新用螺栓拧紧。
- 在轨道装在支架上之前,适当拧紧螺栓,待位置确定后再拧紧螺栓。

5.0	ADDED 4AA OPTION. ADDED CHINESE TRANSLATION AND APPLIED DUAL-LANGUAGE AND GLOBAL TITLE BLOCK. 添加4AA选项. 添加中文翻译 并且更换成双语言框。	01/25/08	HeCY	WangL	JinL	197575GA
4.0	NO CHANGE TO THIS SHEET; SEE SHEET #2 & 10.	03/28/07	PK-H	JB	-	195307DL
3.0	ADDED NOTE #14 & 15; SEE SHEET #2,3,5,6,8 ,9 & 10.	03-09-07	RK-H	JB	JB	195307DJ
REV	REVISION RECORD	DATE	BY	CHK'D	APP'D	NPCA NO.

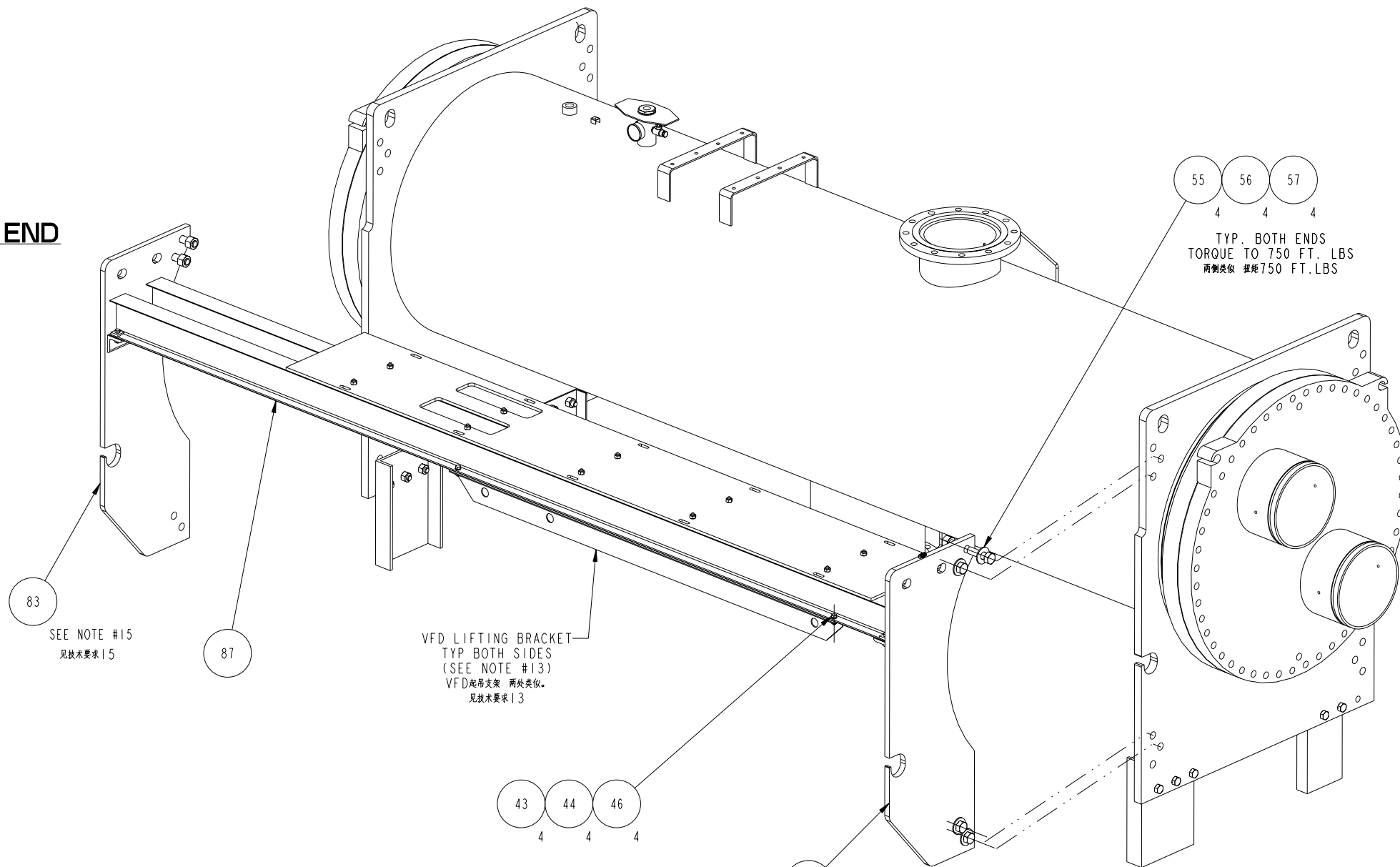
DRAWING RELEASE LEVEL: PRODUCTION		 Carrier A United Technologies Company
THIRD ANGLE PROJECTION	 THIS DOCUMENT AND THE INFORMATION CONTAINED THEREIN IS PROPRIETARY TO CARRIER CORPORATION AND SHALL NOT BE USED OR DISCLOSED TO OTHERS, IN WHOLE OR IN PART, WITHOUT THE WRITTEN AUTHORIZATION OF CARRIER CORPORATION.	
MATERIAL	UNLESS OTHERWISE SPECIFIED DIMENSIONS ARE IN INCHES WITH METRIC CONVERSIONS IN (MILLIMETERS)	TITLE VFD ARR LF2 4AA & 4CC VFD布置 LF2 4AA & 4CC
SEE BILL OF MATERIAL	1 DEC 2 DEC 3 DEC ANG ±° ±° ±° ±°	
ENGINEERING REQUIREMENTS	±[] ±[] ±[]	DIMENSIONS IN (PARENTHESIS) ARE FOR INFORMATION PURPOSES ONLY
WEIGHT: -		
SURFACE FINISH	CAD MODEL	SIZE D DRAWING NUMBER 19XV04005801 REV 5.0 SHEET 1 OF 11
-	19XV04005801_G 5.0	

UNCONTROLLED WHEN PRINTED

8 7 6 5 4 3 2 1

D
C
B
A

COMPRESSOR END
压缩机端



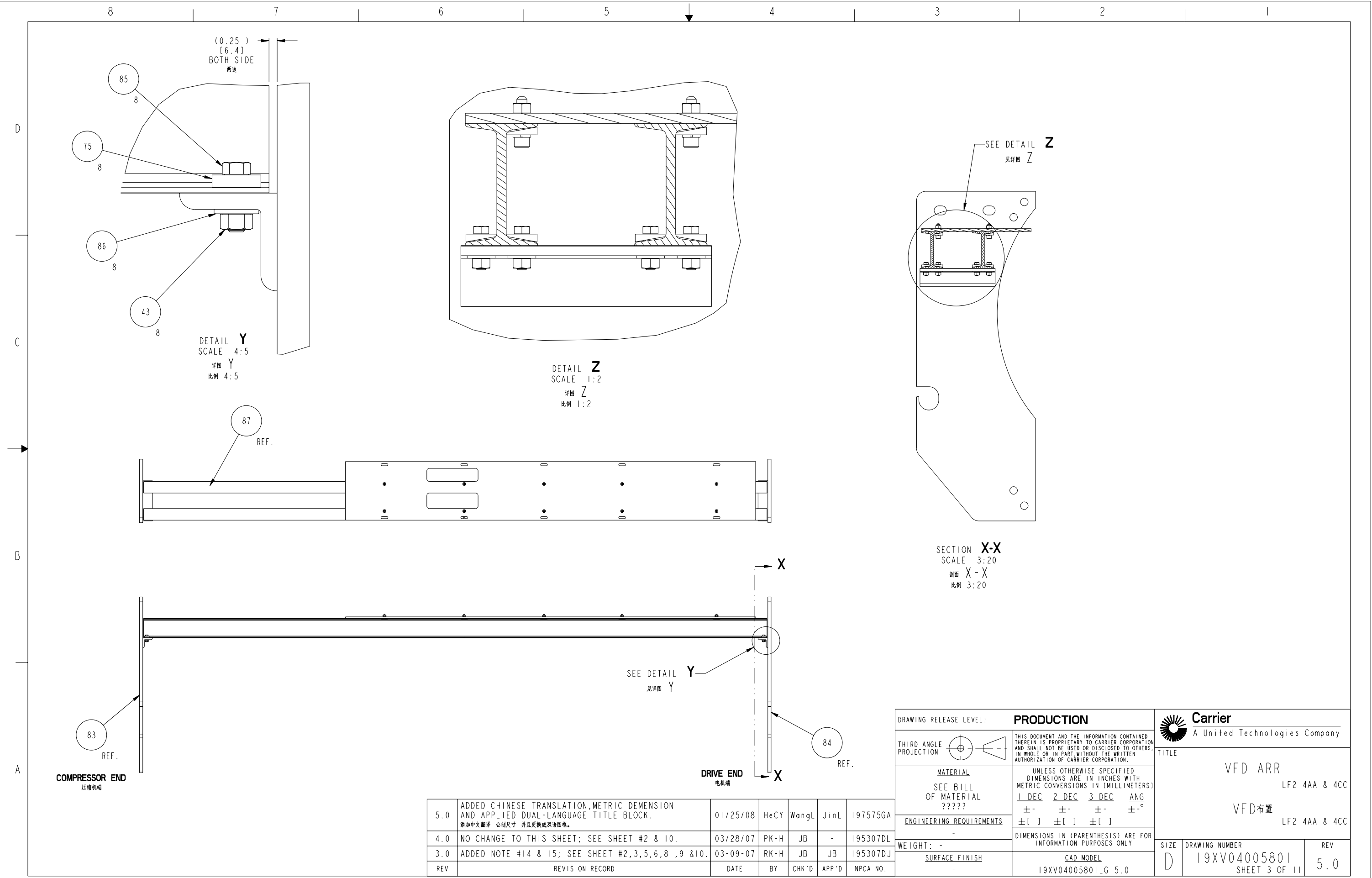
SEE SHEET#3 FOR VFD SUPPORT ASSEMBLY DETAILS
VFD支撑组件详图见第3页

DRIVE END
电机端

5.0	ADDED 4AA OPTION. ADDED CHINESE TRANSLATION AND APPLIED DUAL-LANGUAGE AND GLOBAL TITLE BLOCK. 添加4AA选项。添加中文翻译 并且更换成双语图框。	01/25/08	HeCY	WangL	JinL	197575GA
4.0	NO CHANGE TO THIS SHEET; SEE SHEET #2 & 10.	03/28/07	PK-H	JB	-	195307DL
3.0	ADDED NOTE #14 & 15; SEE SHEET #2,3,5,6,8 ,9 &10.	03-09-07	RK-H	JB	JB	195307DJ
REV	REVISION RECORD	DATE	BY	CHK'D	APP'D	NPCA NO.

DRAWING RELEASE LEVEL: PRODUCTION		Carrier A United Technologies Company	
THIRD ANGLE PROJECTION		THIS DOCUMENT AND THE INFORMATION CONTAINED THEREIN IS PROPRIETARY TO CARRIER CORPORATION AND SHALL NOT BE USED OR DISCLOSED TO OTHERS, IN WHOLE OR IN PART, WITHOUT THE WRITTEN AUTHORIZATION OF CARRIER CORPORATION.	
MATERIAL	SEE BILL OF MATERIAL ?????	UNLESS OTHERWISE SPECIFIED DIMENSIONS ARE IN INCHES WITH METRIC CONVERSIONS IN [MILLIMETERS] 1 DEC 2 DEC 3 DEC ANG ±- ±- ±- ±-° ±[] ±[] ±[]	
ENGINEERING REQUIREMENTS	-	DIMENSIONS IN (PARENTHESIS) ARE FOR INFORMATION PURPOSES ONLY	
WEIGHT: -	SURFACE FINISH	CAD MODEL	19XV04005801_G 5.0
SIZE D		DRAWING NUMBER	REV
		19XV04005801	5.0
		SHEET 2 OF 11	

TITLE
VFD ARR
LF2 4AA & 4CC
VFD布置
LF2 4AA & 4CC



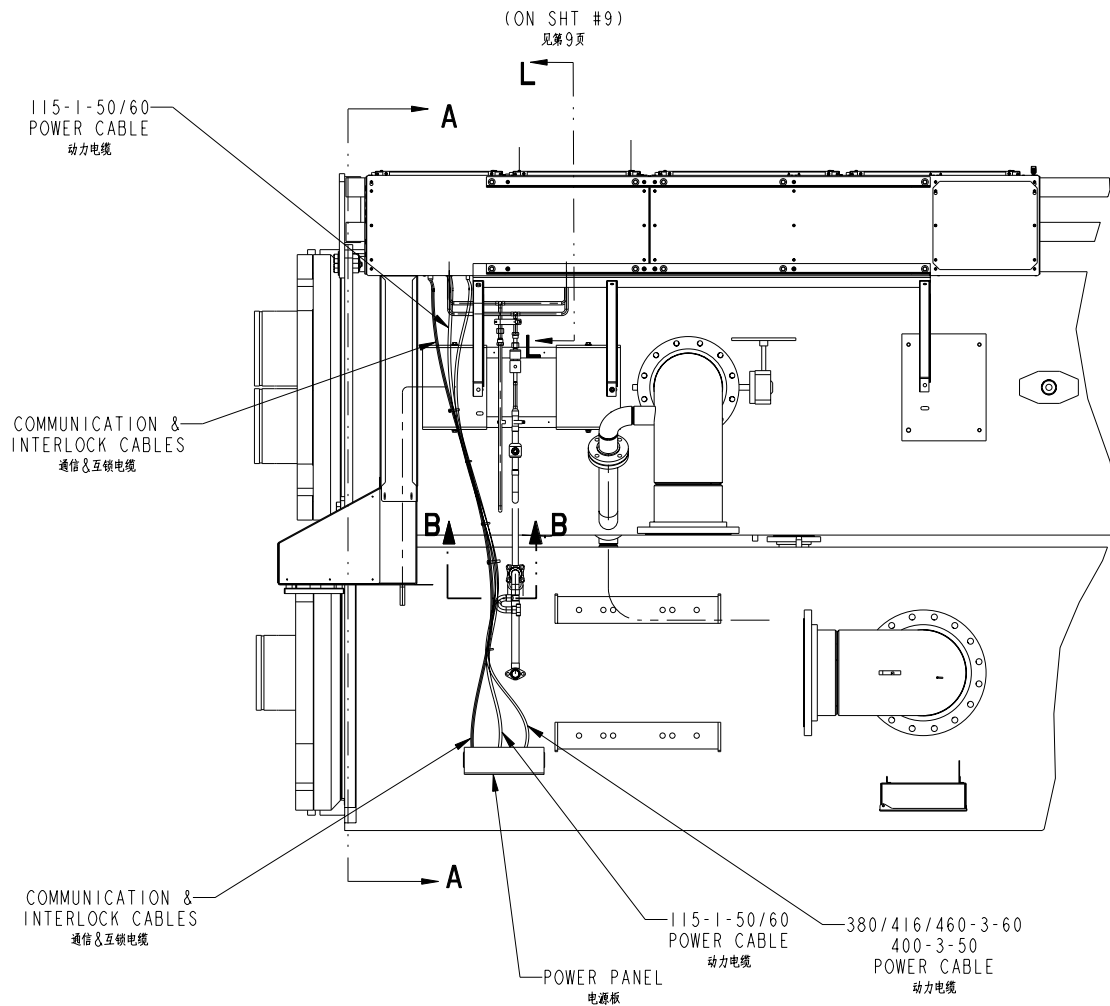
5.0	ADDED CHINESE TRANSLATION, METRIC DIMENSION AND APPLIED DUAL-LANGUAGE TITLE BLOCK. 添加中文翻译 公制尺寸 并且更换成双语言图框。	01/25/08	HeCY	WangL	JinL	197575GA
4.0	NO CHANGE TO THIS SHEET; SEE SHEET #2 & 10.	03/28/07	PK-H	JB	-	195307DL
3.0	ADDED NOTE #14 & 15; SEE SHEET #2,3,5,6,8,9 & 10.	03-09-07	RK-H	JB	JB	195307DJ
REV	REVISION RECORD	DATE	BY	CHK'D	APP'D	NPCA NO.

DRAWING RELEASE LEVEL: PRODUCTION		Carrier A United Technologies Company	
THIRD ANGLE PROJECTION		<small>THIS DOCUMENT AND THE INFORMATION CONTAINED THEREIN IS PROPRIETARY TO CARRIER CORPORATION AND SHALL NOT BE USED OR DISCLOSED TO OTHERS, IN WHOLE OR IN PART, WITHOUT THE WRITTEN AUTHORIZATION OF CARRIER CORPORATION.</small>	
MATERIAL	SEE BILL OF MATERIAL ?????	<small>UNLESS OTHERWISE SPECIFIED DIMENSIONS ARE IN INCHES WITH METRIC CONVERSIONS IN [MILLIMETERS]</small> 1 DEC 2 DEC 3 DEC ANG ± [] ± [] ± [] ± []	
ENGINEERING REQUIREMENTS	-	<small>DIMENSIONS IN (PARENTHESIS) ARE FOR INFORMATION PURPOSES ONLY</small>	
WEIGHT: -	SURFACE FINISH	CAD MODEL	19XV04005801_G 5.0
SIZE	D	DRAWING NUMBER	19XV04005801 SHEET 3 OF 11
REV	5.0		

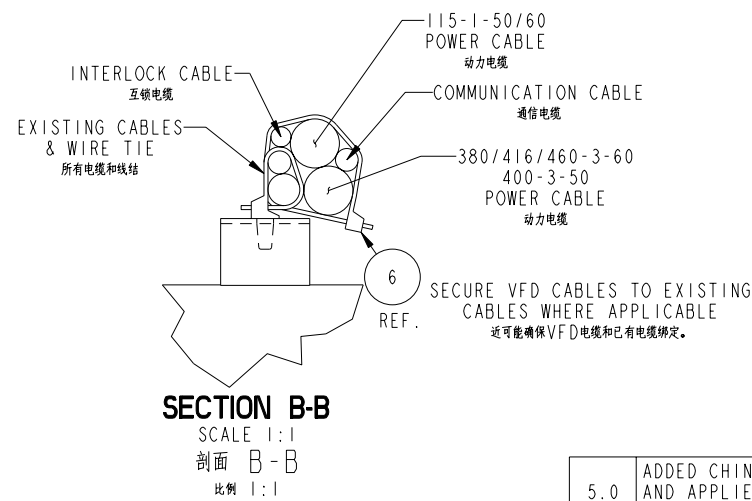
TITLE
VFD ARR
 LF2 4AA & 4CC
VFD布置
 LF2 4AA & 4CC

UNCONTROLLED WHEN PRINTED

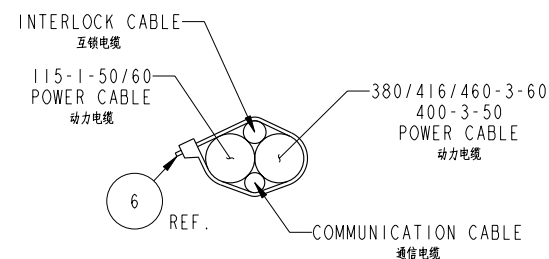
8 7 6 5 4 3 2 1



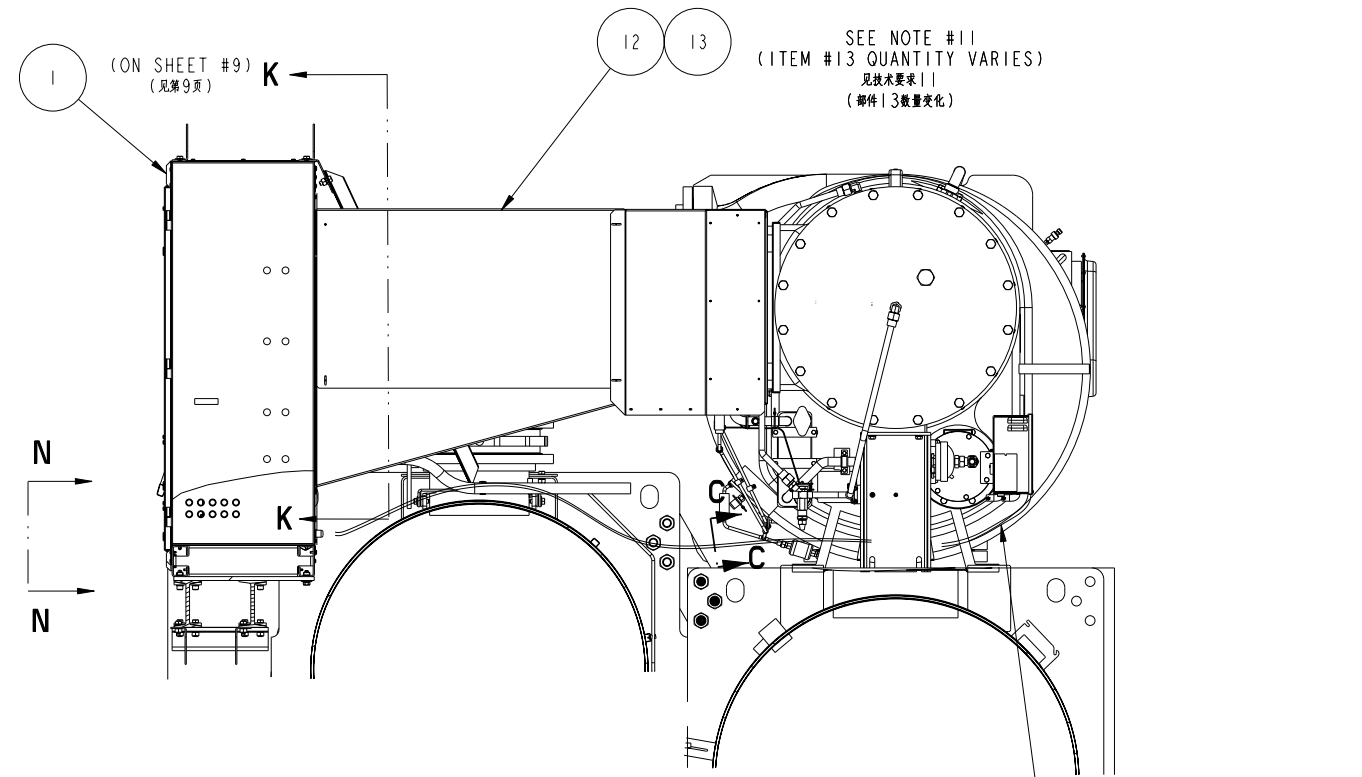
PARTIAL TOP VIEW
部分俯视图



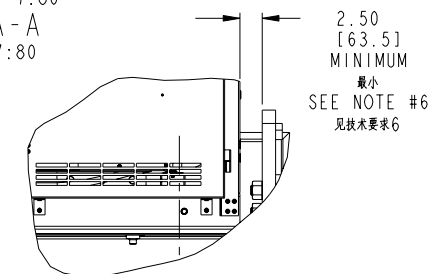
SECTION B-B
SCALE 1:1
剖面 B-B
比例 1:1



SECTION C-C
TYP (4) PLACES
SCALE 1:1
剖面 C-C
比例 1:1



SECTION A-A
SCALE 7:80
剖面 A-A
比例 7:80



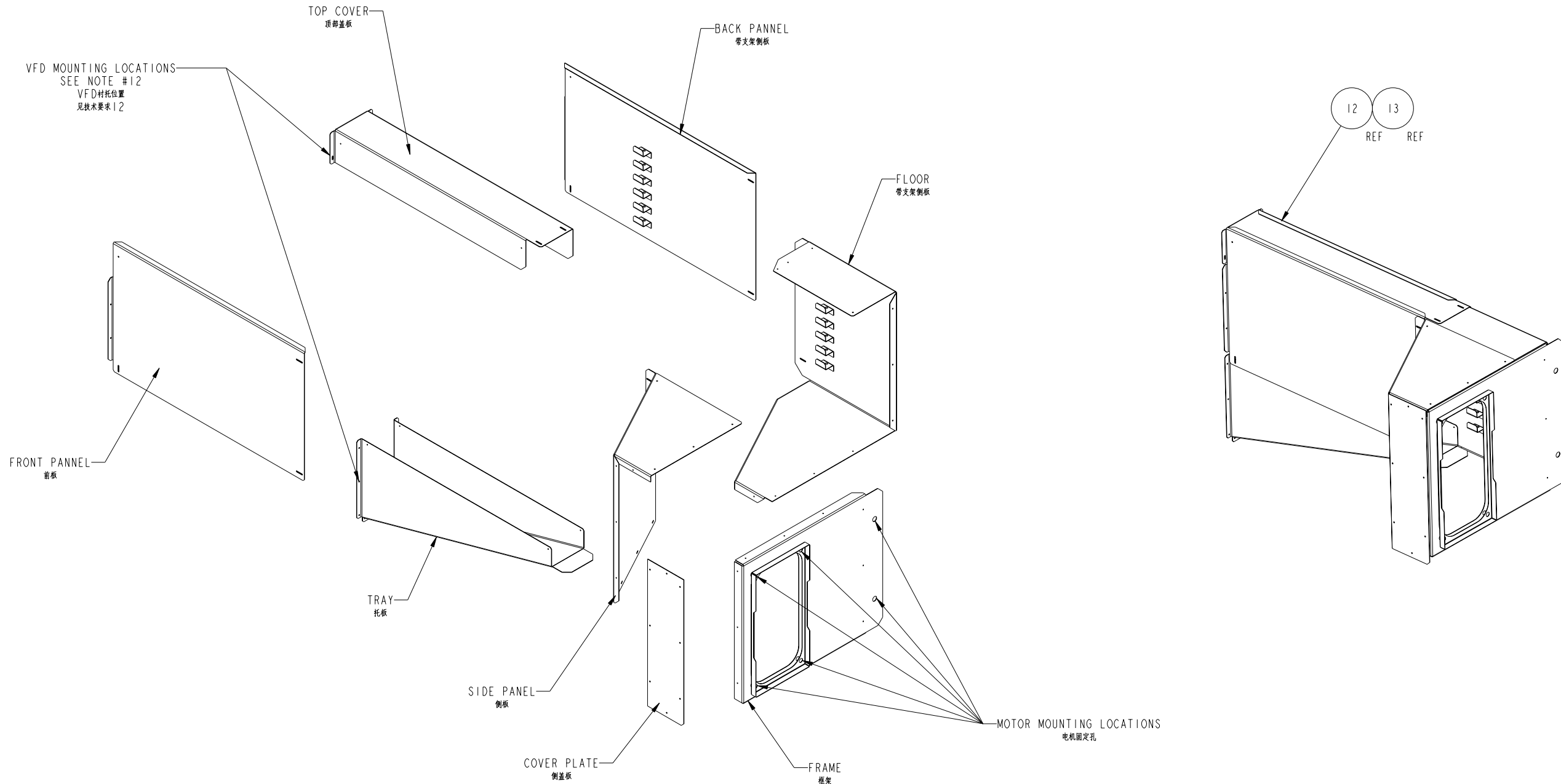
SECTION N-N
SCALE 1:8
DIMENSION TO LOCATE VFD CABINET
OFFSET FROM TUBE SHEET ON
SEE NOTE #6
剖面 N-N
比例 1:8
定位VFD启动柜偏移管板的距离
见技术要求6

5.0	ADDED CHINESE TRANSLATION, METRIC DIMENSION AND APPLIED DUAL-LANGUAGE TITLE BLOCK. 添加中文翻译 公制尺寸 并且更换成双语图框。	01/25/08	HeCY	WangL	JinL	197575GA
4.0	NO CHANGE TO THIS SHEET; SEE SHEET #2 & 10.	03/28/07	PK-H	JB	-	195307DL
3.0	ADDED NOTE #14 & 15; SEE SHEET #2,3,5,6,8,9 & 10.	03-09-07	RK-H	JB	JB	195307DJ
REV	REVISION RECORD	DATE	BY	CHK'D	APP'D	NPCA NO.

DRAWING RELEASE LEVEL: PRODUCTION		Carrier A United Technologies Company	
THIRD ANGLE PROJECTION		THIS DOCUMENT AND THE INFORMATION CONTAINED THEREIN IS PROPRIETARY TO CARRIER CORPORATION AND SHALL NOT BE USED OR DISCLOSED TO OTHERS, IN WHOLE OR IN PART, WITHOUT THE WRITTEN AUTHORIZATION OF CARRIER CORPORATION.	
MATERIAL	SEE BILL OF MATERIAL ?????	UNLESS OTHERWISE SPECIFIED DIMENSIONS ARE IN INCHES WITH METRIC CONVERSIONS IN [MILLIMETERS] 1 DEC 2 DEC 3 DEC ANG ± ± ± ± ° ±[] ±[] ±[]	
ENGINEERING REQUIREMENTS	-	DIMENSIONS IN (PARENTHESIS) ARE FOR INFORMATION PURPOSES ONLY	
WEIGHT: -	SURFACE FINISH	CAD MODEL	19XV04005801_G 5.0
SIZE	D	DRAWING NUMBER	19XV04005801 SHEET 4 OF 11
REV	5.0	VFD ARR LF2 4AA & 4CC VFD布置 LF2 4AA & 4CC	

8 7 6 5 4 3 2 1

D
C
B
A



POWER CABLE ENCLOSURE CONSTRUCTION
PARTS SHOWN OFFSET FROM FRAME FOR CLARITY
动力电缆框架
为更清楚表述安装, 采用爆炸视图。

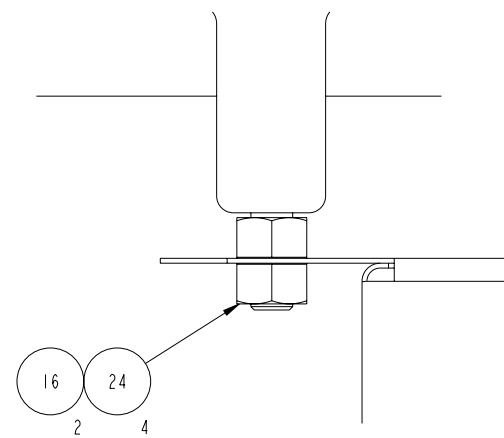
5.0	ADDED CHINESE TRANSLATION AND APPLIED DUAL-LANGUAGE AND GLOBAL TITLE BLOCK. 添加中文翻译 并且更换成双语图框。	01/25/08	HeCY	WangL	JinL	197575GA
4.0	NO CHANGE TO THIS SHEET; SEE SHEET #2 & 10.	03/28/07	PK-H	JB	-	195307DL
3.0	ADDED NOTE #14 & 15; SEE SHEET #2,3,5,6,8 ,9 &10.	03-09-07	RK-H	JB	JB	195307DJ
REV	REVISION RECORD	DATE	BY	CHK'D	APP'D	NPCA NO.

DRAWING RELEASE LEVEL: PRODUCTION		Carrier A United Technologies Company	
THIRD ANGLE PROJECTION		THIS DOCUMENT AND THE INFORMATION CONTAINED THEREIN IS PROPRIETARY TO CARRIER CORPORATION AND SHALL NOT BE USED OR DISCLOSED TO OTHERS, IN WHOLE OR IN PART, WITHOUT THE WRITTEN AUTHORIZATION OF CARRIER CORPORATION.	
MATERIAL	SEE BILL OF MATERIAL ?????	UNLESS OTHERWISE SPECIFIED DIMENSIONS ARE IN INCHES WITH METRIC CONVERSIONS IN [MILLIMETERS] 1 DEC 2 DEC 3 DEC ANG ±- ±- ±- ±-° ±[] ±[] ±[]	
ENGINEERING REQUIREMENTS	-	DIMENSIONS IN (PARENTHESIS) ARE FOR INFORMATION PURPOSES ONLY	
WEIGHT: -	SURFACE FINISH	CAD MODEL 19XV04005801_G 5.0	
SIZE		DRAWING NUMBER	REV
D		19XV04005801 SHEET 5 OF 11	5.0

TITLE
VFD ARR
LF2 4AA & 4CC
VFD布置
LF2 4AA & 4CC

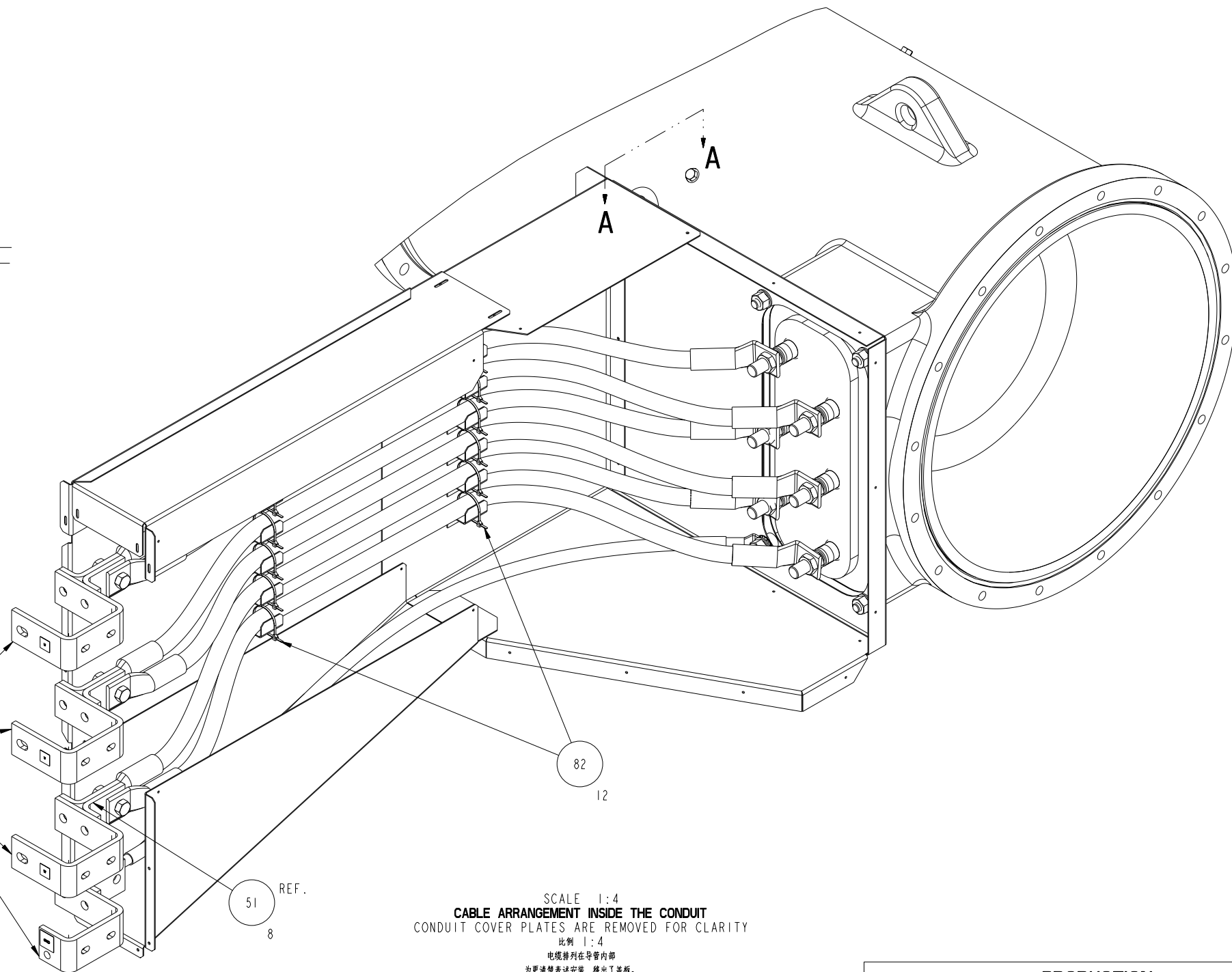
8 7 6 5 4 3 2 1

D
C
B
A



VIEW **AA**
视图 **AA**

THESE PARTS EXIST INSIDE
THE VFD ASSEMBLY
这些零件在VFD启动柜内



SCALE 1:4
CABLE ARRANGEMENT INSIDE THE CONDUIT
CONDUIT COVER PLATES ARE REMOVED FOR CLARITY
比例 1:4
电缆排列在导管内部
为更清楚表达安装，移出了盖板。

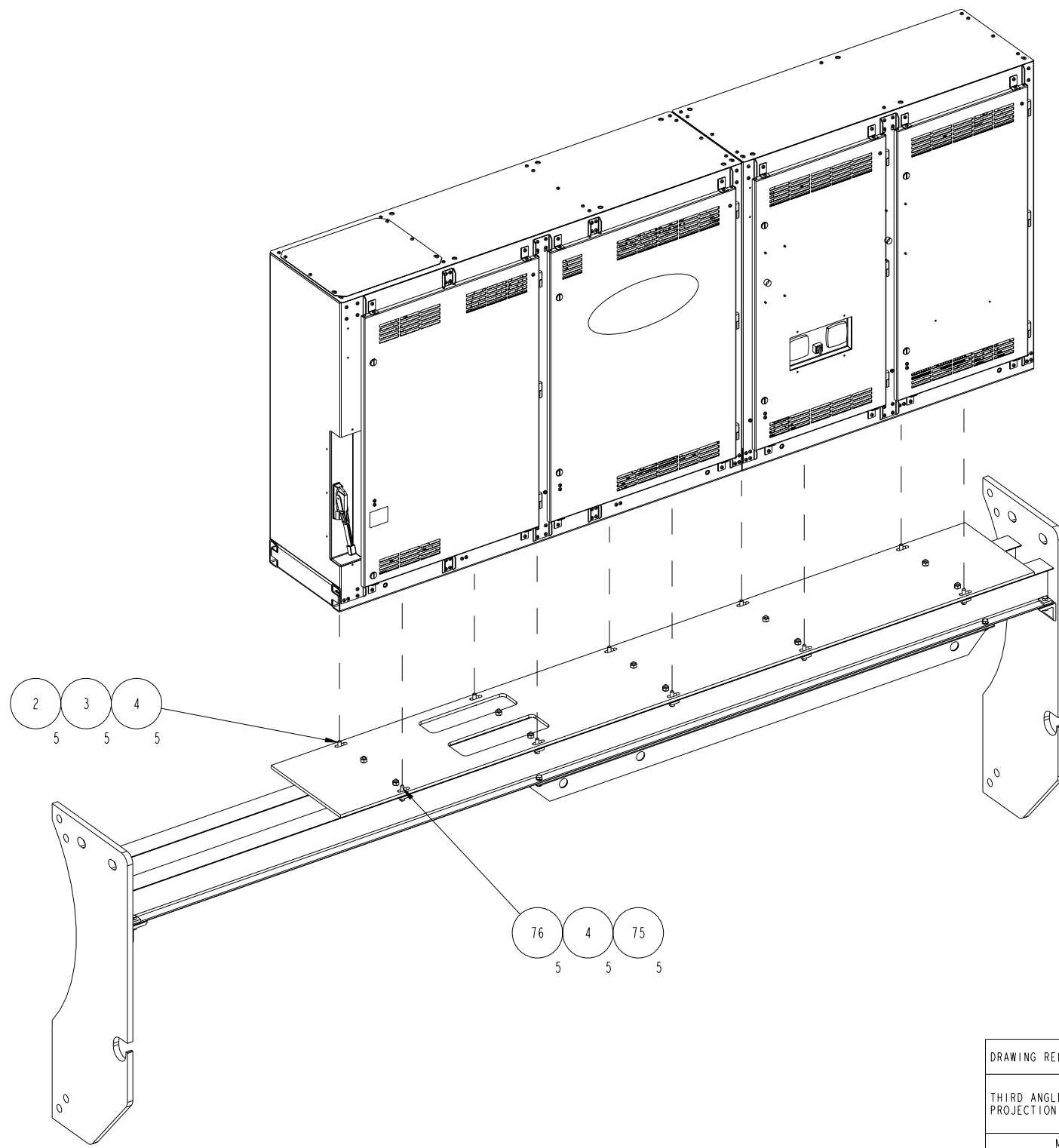
5.0	ADDED CHINESE TRANSLATION AND APPLIED DUAL-LANGUAGE AND GLOBAL TITLE BLOCK. 添加中文翻译 并且更换成双语图框。	01/25/08	HeCY	WangL	JinL	197575GA
4.0	NO CHANGE TO THIS SHEET; SEE SHEET #2 & 10.	03/28/07	PK-H	JB	-	195307DL
3.0	ADDED NOTE #14 & 15; SEE SHEET #2,3,5,6,8 ,9 &10.	03-09-07	RK-H	JB	JB	195307DJ
REV	REVISION RECORD	DATE	BY	CHK'D	APP'D	NPCA NO.

DRAWING RELEASE LEVEL: PRODUCTION		Carrier A United Technologies Company	
THIRD ANGLE PROJECTION		THIS DOCUMENT AND THE INFORMATION CONTAINED THEREIN IS PROPRIETARY TO CARRIER CORPORATION AND SHALL NOT BE USED OR DISCLOSED TO OTHERS, IN WHOLE OR IN PART, WITHOUT THE WRITTEN AUTHORIZATION OF CARRIER CORPORATION.	
MATERIAL	SEE BILL OF MATERIAL ?????	UNLESS OTHERWISE SPECIFIED DIMENSIONS ARE IN INCHES WITH METRIC CONVERSIONS IN [MILLIMETERS] 1 DEC 2 DEC 3 DEC ANG ± ± ± ±° ±[] ±[] ±[]	
ENGINEERING REQUIREMENTS	-	DIMENSIONS IN (PARENTHESIS) ARE FOR INFORMATION PURPOSES ONLY	
WEIGHT: -	SURFACE FINISH	CAD MODEL	19XV04005801_G 5.0
SIZE	D	DRAWING NUMBER	19XV04005801 SHEET 6 OF 11
REV	5.0		

TITLE
VFD ARR
LF2 4AA & 4CC
VFD布置
LF2 4AA & 4CC

8 7 6 5 4 3 2 1

D
C
B
A



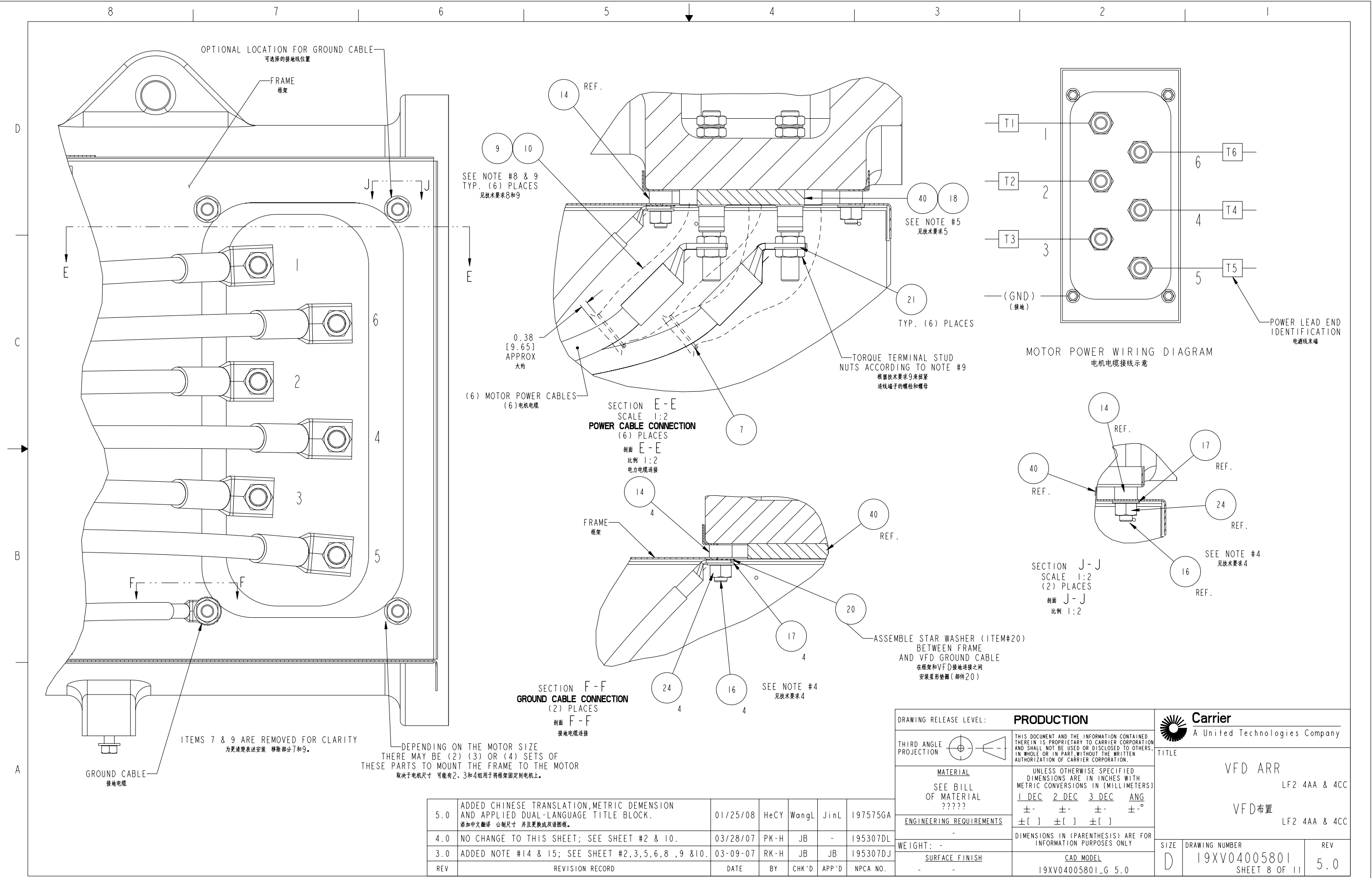
COMPRESSOR END
压缩机端

DRIVE END
电机端

5.0	ADDED CHINESE TRANSLATION AND APPLIED DUAL-LANGUAGE AND GLOBAL TITLE BLOCK. 添加中文翻译 并且更换成双语图框。	01/25/08	HeCY	WangL	JinL	197575GA
4.0	NO CHANGE TO THIS SHEET; SEE SHEET #2 & 10.	03/28/07	PK-H	JB	-	195307DL
3.0	ADDED NOTE #14 & 15; SEE SHEET #2,3,5,6,8 ,9 &10.	03-09-07	RK-H	JB	JB	195307DJ
REV	REVISION RECORD	DATE	BY	CHK'D	APP'D	NPCA NO.

DRAWING RELEASE LEVEL: PRODUCTION		Carrier A United Technologies Company	
THIRD ANGLE PROJECTION		THIS DOCUMENT AND THE INFORMATION CONTAINED THEREIN IS PROPRIETARY TO CARRIER CORPORATION AND SHALL NOT BE USED OR DISCLOSED TO OTHERS, IN WHOLE OR IN PART, WITHOUT THE WRITTEN AUTHORIZATION OF CARRIER CORPORATION.	
MATERIAL	SEE BILL OF MATERIAL ?????	UNLESS OTHERWISE SPECIFIED DIMENSIONS ARE IN INCHES WITH METRIC CONVERSIONS IN (MILLIMETERS) 1 DEC 2 DEC 3 DEC ANG ±- ±- ±- ±-° ±[] ±[] ±[]	
ENGINEERING REQUIREMENTS	-	DIMENSIONS IN (PARENTHESIS) ARE FOR INFORMATION PURPOSES ONLY	
WEIGHT: -	SURFACE FINISH	CAD MODEL	SIZE D DRAWING NUMBER 19XV04005801 SHEET 7 OF 11 REV 5.0
		19XV04005801_G 5.0	

UNCONTROLLED WHEN PRINTED



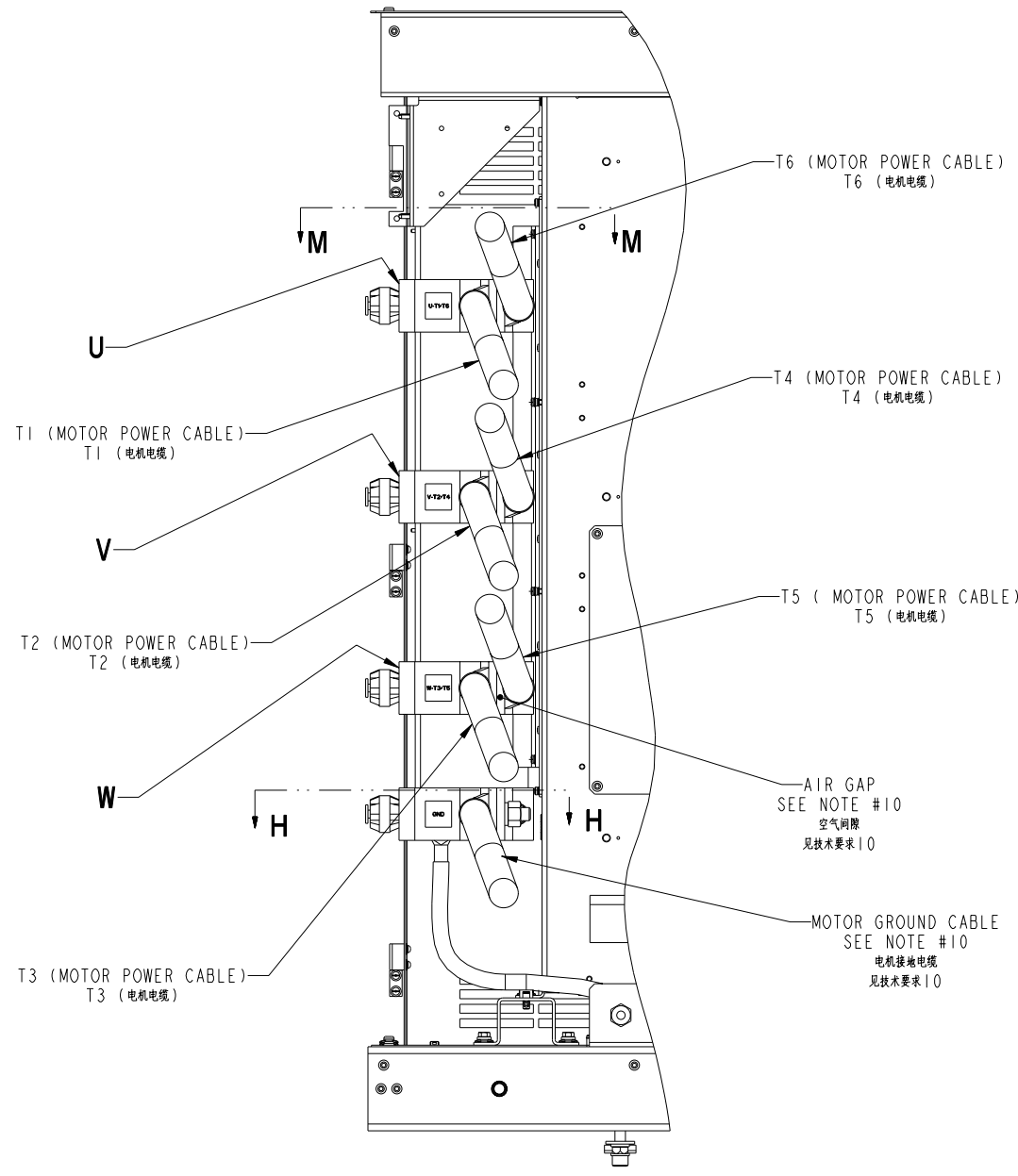
5.0	ADDED CHINESE TRANSLATION, METRIC DIMENSION AND APPLIED DUAL-LANGUAGE TITLE BLOCK. 添加中文翻译 公制尺寸 并且更换成双语标题。	01/25/08	HeCY	WangL	JinL	197575GA
4.0	NO CHANGE TO THIS SHEET; SEE SHEET #2 & 10.	03/28/07	PK-H	JB	-	195307DL
3.0	ADDED NOTE #14 & 15; SEE SHEET #2,3,5,6,8,9 & 10.	03-09-07	RK-H	JB	JB	195307DJ
REV	REVISION RECORD	DATE	BY	CHK'D	APP'D	NPCA NO.

DRAWING RELEASE LEVEL: PRODUCTION		Carrier A United Technologies Company	
THIRD ANGLE PROJECTION		THIS DOCUMENT AND THE INFORMATION CONTAINED THEREIN IS PROPRIETARY TO CARRIER CORPORATION AND SHALL NOT BE USED OR DISCLOSED TO OTHERS, IN WHOLE OR IN PART, WITHOUT THE WRITTEN AUTHORIZATION OF CARRIER CORPORATION.	
MATERIAL	SEE BILL OF MATERIAL ?????	UNLESS OTHERWISE SPECIFIED DIMENSIONS ARE IN INCHES WITH METRIC CONVERSIONS IN [MILLIMETERS] 1 DEC 2 DEC 3 DEC ANG ± - ± - ± - ± - ±[] ±[] ±[]	
ENGINEERING REQUIREMENTS	-	DIMENSIONS IN (PARENTHESIS) ARE FOR INFORMATION PURPOSES ONLY	
WEIGHT: -	SURFACE FINISH	CAD MODEL 19XV04005801.G 5.0	
TITLE		SIZE	DRAWING NUMBER
VFD ARR		D	19XV04005801
VFD布置		REV	5.0
LF2 4AA & 4CC		SHEET 8 OF 11	

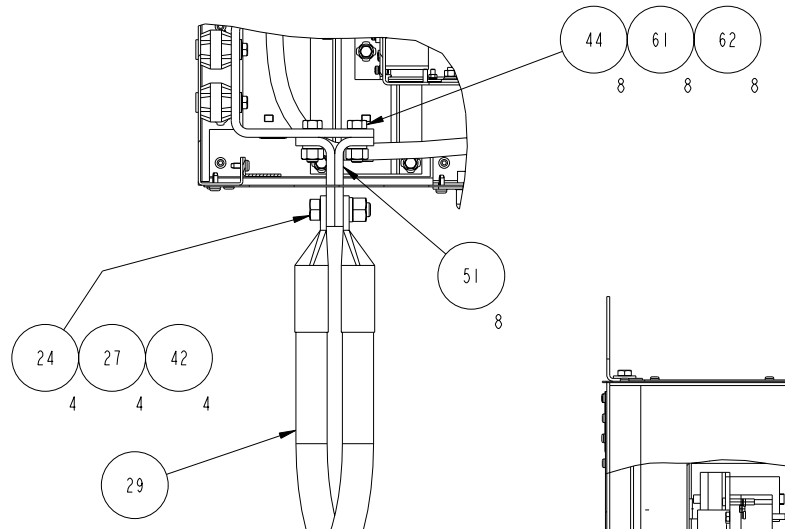
UNCONTROLLED WHEN PRINTED

8 7 6 5 4 3 2 1

D
C
B
A

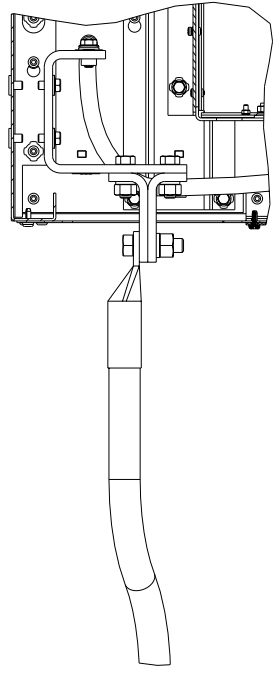


VIEW KK
VFD POWER CABLE LUG DETAILS
SCALE 1:4
视图 KK
VFD电机电缆接头详图
比例 1:4

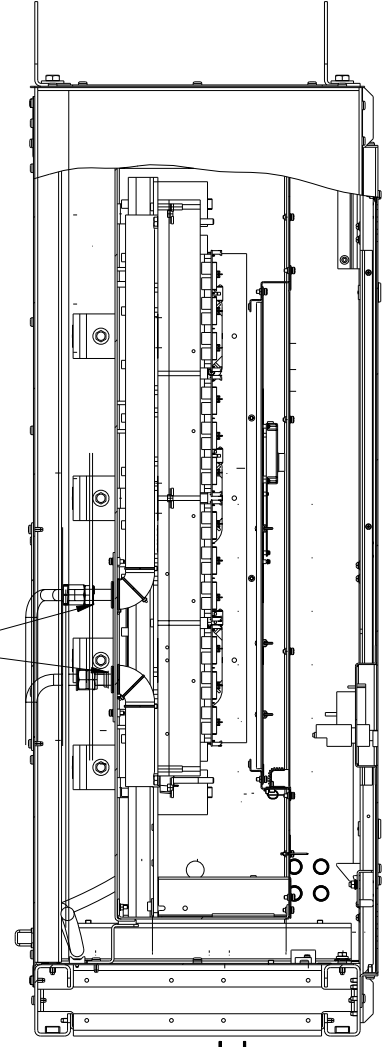


TERMINAL ORIENTATION VARIES
SEE VIEW K-K AND NOTE #10
末端方向改变见
见视图 K-K 和 技术要求10

SECTION M-M (TYP)
SCALE 1:4
(POWER CABLES)
剖面 M-M
比例 1:4
(动力电缆)



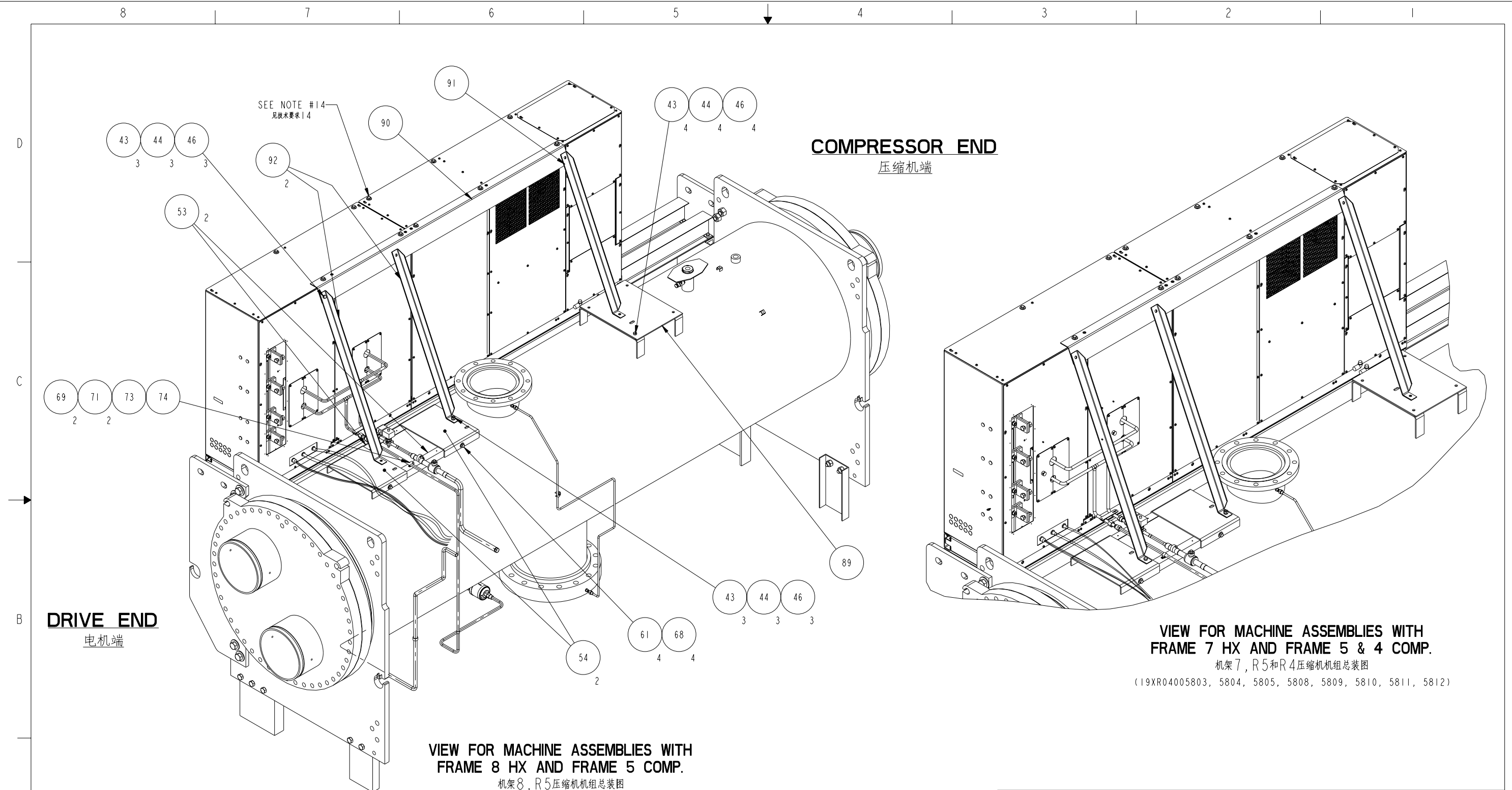
SECTION H-H
SCALE 1:4
剖面 H-H
比例 1:4



SECTION L-L
REFRIGERANT LINES
SCALE 1:5
剖面 L-L
制冷线路
比例 1:5

5.0	ADDED CHINESE TRANSLATION AND APPLIED DUAL-LANGUAGE AND GLOBAL TITLE BLOCK. 添加中文翻译 并且更换成双语图框。	01/25/08	HeCY	WangL	JinL	197575GA
4.0	NO CHANGE TO THIS SHEET; SEE SHEET #2 & 10.	03/28/07	PK-H	JB	-	195307DL
3.0	ADDED NOTE #14 & 15; SEE SHEET #2,3,5,6,8 ,9 &10.	03-09-07	RK-H	JB	JB	195307DJ
REV	REVISION RECORD	DATE	BY	CHK'D	APP'D	NPCA NO.

DRAWING RELEASE LEVEL: PRODUCTION		Carrier A United Technologies Company	
THIRD ANGLE PROJECTION		THIS DOCUMENT AND THE INFORMATION CONTAINED THEREIN IS PROPRIETARY TO CARRIER CORPORATION AND SHALL NOT BE USED OR DISCLOSED TO OTHERS, IN WHOLE OR IN PART, WITHOUT THE WRITTEN AUTHORIZATION OF CARRIER CORPORATION.	
MATERIAL	SEE BILL OF MATERIAL ?????	UNLESS OTHERWISE SPECIFIED DIMENSIONS ARE IN INCHES WITH METRIC CONVERSIONS IN [MILLIMETERS] 1 DEC 2 DEC 3 DEC ANG ±- ±- ±- ±-° ±[] ±[] ±[]	
ENGINEERING REQUIREMENTS	-	DIMENSIONS IN (PARENTHESIS) ARE FOR INFORMATION PURPOSES ONLY	
WEIGHT: -	SURFACE FINISH	CAD MODEL	19XV04005801_G 5.0
TITLE		SIZE	REV
VFD ARR VFD布置		D	5.0
LF2 4AA & 4CC LF2 4AA & 4CC		DRAWING NUMBER 19XV04005801 SHEET 9 OF 11	



5.0	ADDED 4AA OPTION. ADDED CHINESE TRANSLATION AND APPLIED DUAL-LANGUAGE AND GLOBAL TITLE BLOCK. 添加4AA选项。添加中文翻译 并且更换成双语图框。	01/25/08	HeCY	WangL	JinL	197575GA
4.0	NO CHANGE TO THIS SHEET; SEE SHEET #2 & 10.	03/28/07	PK-H	JB	-	195307DL
3.0	ADDED NOTE #14 & 15; SEE SHEET #2,3,5,6,8,9 & 10.	03-09-07	RK-H	JB	JB	195307DJ
REV	REVISION RECORD	DATE	BY	CHK'D	APP'D	NPCA NO.

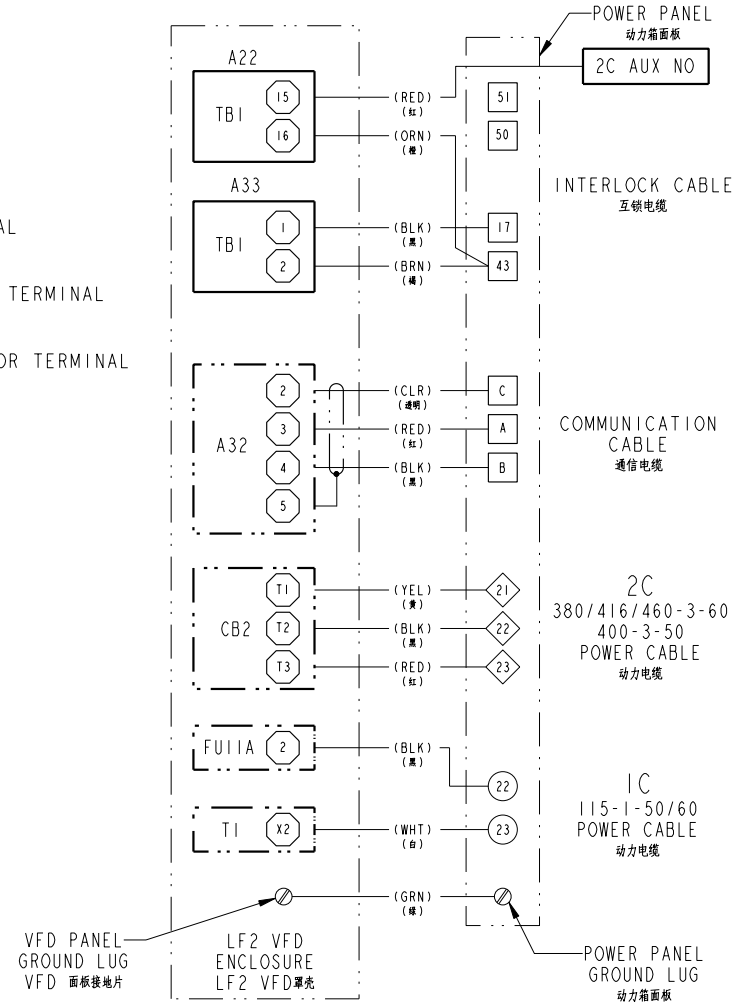
DRAWING RELEASE LEVEL: PRODUCTION		Carrier A United Technologies Company	
THIRD ANGLE PROJECTION		THIS DOCUMENT AND THE INFORMATION CONTAINED THEREIN IS PROPRIETARY TO CARRIER CORPORATION AND SHALL NOT BE USED OR DISCLOSED TO OTHERS, IN WHOLE OR IN PART, WITHOUT THE WRITTEN AUTHORIZATION OF CARRIER CORPORATION.	
MATERIAL	SEE BILL OF MATERIAL ?????	UNLESS OTHERWISE SPECIFIED DIMENSIONS ARE IN INCHES WITH METRIC CONVERSIONS IN [MILLIMETERS] 1 DEC 2 DEC 3 DEC ANG ±- ±- ±- ±-° ±[] ±[] ±[]	
ENGINEERING REQUIREMENTS	-	DIMENSIONS IN (PARENTHESIS) ARE FOR INFORMATION PURPOSES ONLY	
WEIGHT: -	SURFACE FINISH	CAD MODEL 19XV04005801_G 5.0	
TITLE VFD ARR LF2 4AA & 4CC VFD布置 LF2 4AA & 4CC		SIZE	DRAWING NUMBER 19XV04005801 SHEET 10 OF 11
		REV	5.0

UNCONTROLLED WHEN PRINTED

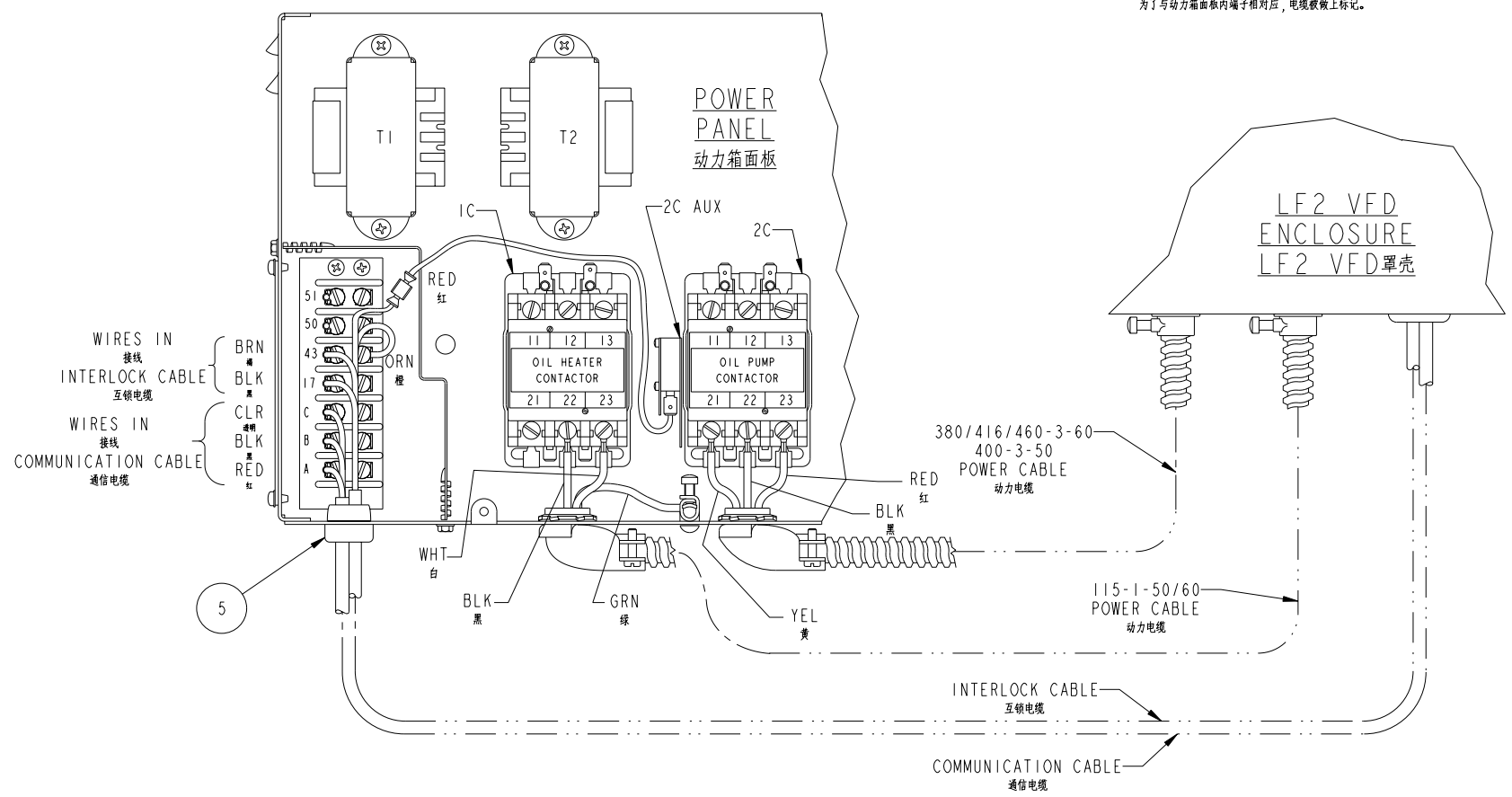
LEGEND
图例

- DENOTES VFD PANEL TERMINAL
指VFD面板端子
- DENOTES POWER PANEL TERMINAL
指动力箱面板端子
- ◇ DENOTES OIL PUMP CONTACTOR TERMINAL
指油泵接触器端子
- DENOTES OIL HEATER CONTACTOR TERMINAL
指油加热器接触器端子

WIRING SCHEMATIC
接线示意图



CABLE LOCATIONS ON THE VFD ENCLOSURE ARE MODIFIED IN THIS VIEW FOR CLARITY. CABLES ARE MARKED TO COINCIDE WITH THEIR TERMINATIONS IN THE POWER PANEL.
VFD壳内电缆连接位置。
为了与动力箱面板内端子相对应，电缆图上标记。



5.0	ADDED CHINESE TRANSLATION AND APPLIED DUAL-LANGUAGE AND GLOBAL TITLE BLOCK. 添加中文翻译 并且更改成双语图框。	01/25/08	HeCY	WangL	JinL	197575GA
4.0	NO CHANGE TO THIS SHEET; SEE SHEET #2 & 10.	03/28/07	PK-H	JB	-	195307DL
3.0	ADDED NOTE #14 & 15; SEE SHEET #2,3,5,6,8,9 & 10.	03-09-07	RK-H	JB	JB	195307DJ
REV	REVISION RECORD	DATE	BY	CHK'D	APP'D	NPCA NO.

DRAWING RELEASE LEVEL:	PRODUCTION
THIRD ANGLE PROJECTION	THIS DOCUMENT AND THE INFORMATION CONTAINED THEREIN IS PROPRIETARY TO CARRIER CORPORATION AND SHALL NOT BE USED OR DISCLOSED TO OTHERS, IN WHOLE OR IN PART, WITHOUT THE WRITTEN AUTHORIZATION OF CARRIER CORPORATION.
MATERIAL	UNLESS OTHERWISE SPECIFIED DIMENSIONS ARE IN INCHES WITH METRIC CONVERSIONS IN [MILLIMETERS]
SEE BILL OF MATERIAL	1 DEC 2 DEC 3 DEC ANG ±- ±- ±- ±-°
ENGINEERING REQUIREMENTS	±[] ±[] ±[]
WEIGHT: -	DIMENSIONS IN (PARENTHESIS) ARE FOR INFORMATION PURPOSES ONLY
SURFACE FINISH	CAD MODEL 19XV04005801_G 5.0

Carrier
A United Technologies Company

TITLE
VFD ARR
LF2 4AA & 4CC
VFD布置
LF2 4AA & 4CC

SIZE: D
DRAWING NUMBER: 19XV04005801
SHEET 11 OF 11
REV: 5.0