

MODEL YS NN NN S7 1250 TONS MICROCOMPUTER CONTROL CENTER



REFERENCE LITERATURE:	Installation Instruction	Form 160.65-N1
	Operation & Maintenance	Form 160.65-O1
	Control Center Operation and Service	Form 160.65-OM1
	Service, Compressor and Unit	Form 160.65-M1
RENEWAL PARTS:	General	Form 160.65-RP1
	Compressor	Form 160.65-RP2
	Refrigerant Transfer Unit	Form 160.65-RP4

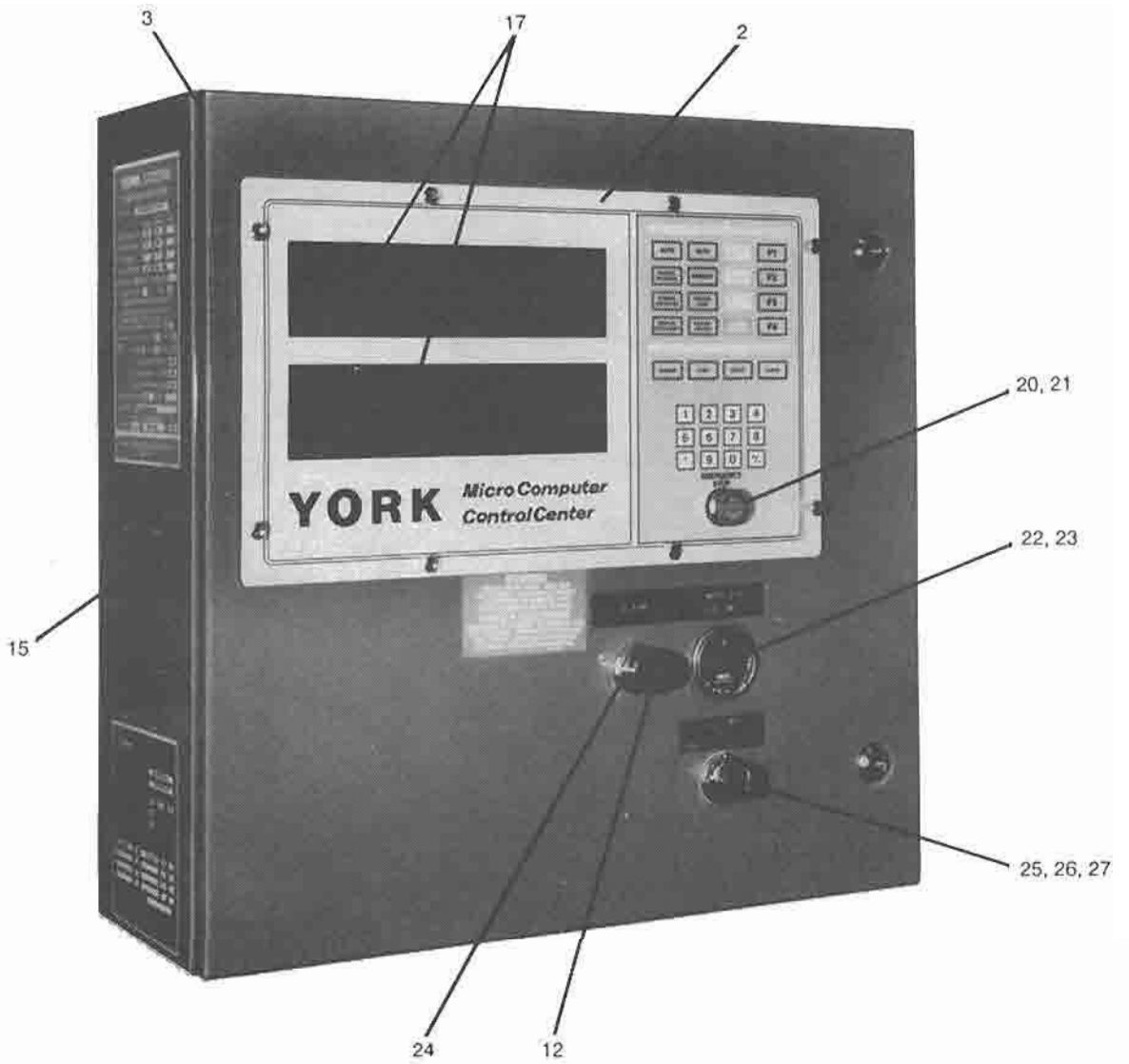
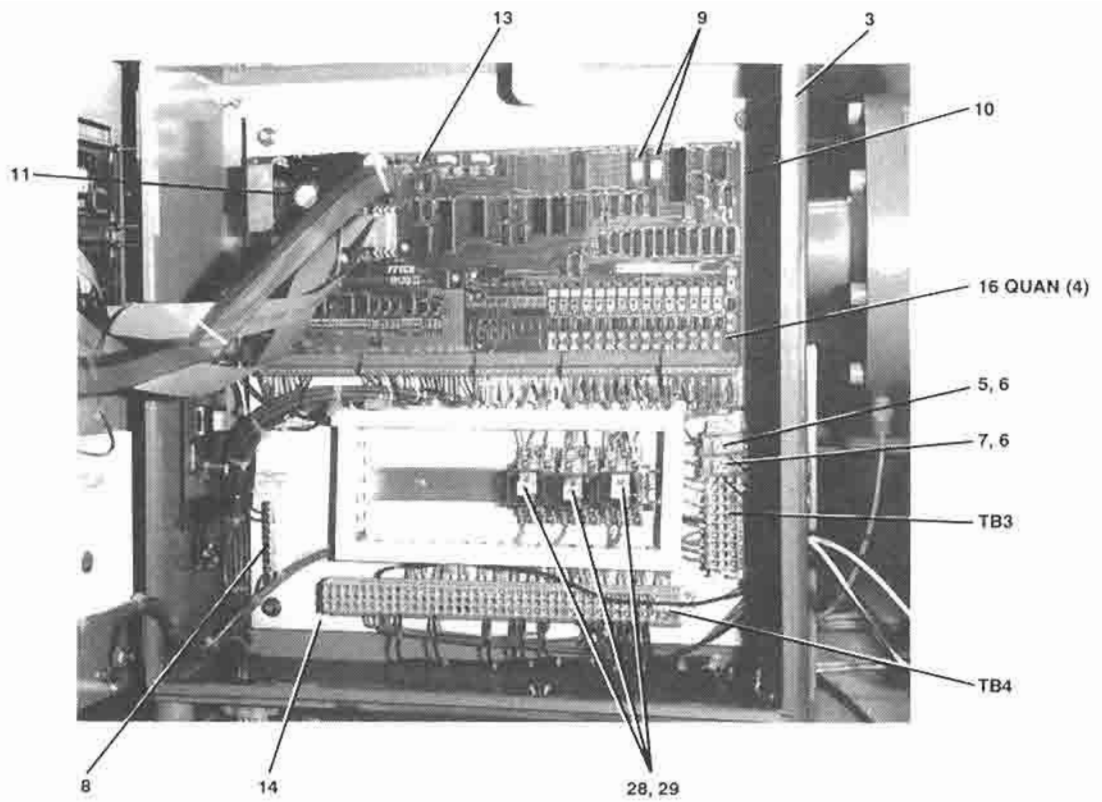


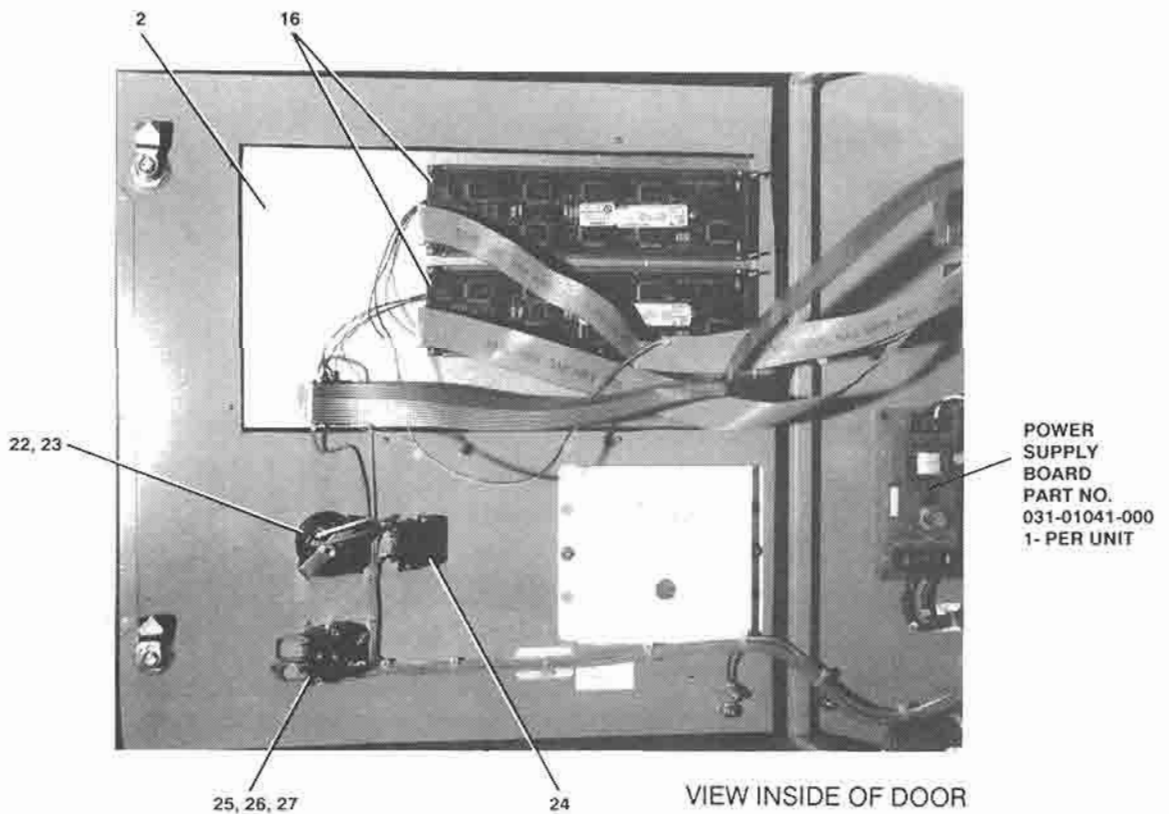
FIG. 1 – MICROCOMPUTER CONTROL CENTER

MICROCOMPUTER CONTROL CENTER

ITEM	DESCRIPTION	FIG. NO.	QUAN. PER UNIT	PART NO.
1	CONTROL CENTER (COMPLETE)	1	1	025-28710-000
2	MICROCOVER W/KEYPAD	1	1	025-28966-001
3	GASKET, ENCLOSURE	1	1	025-28966-002
4	FUSE 1.5 AMP	2	17	025-28966-003
5	FUSE, FU1 20 AMP, 125V BUSS BAF 20	2	1	025-28966-004
6	BLOCK, FUSE	2	2	025-28966-005
7	FUSE, FU2 10 AMP, 250V BUSS FMN10	2	1	025-28966-006
8	CLAMP, GROUND	2	1	025-28966-007
9	PROM CHIPS	2	2	025-28966-008
10	PC BOARD	2	1	025-28966-009
11	MODULE, OUTPUT	2	1	025-28966-010
12	LENS, RED	1	1	025-28966-011
13	BATTERY, BACKUP	2	1	025-28966-012
14	SUBPLATE, 21" X 21"	2	1	025-28966-013
15	ENCLOSURE	1	1	025-28966-014
16	LCD DISPLAY	2	2	025-28966-015
17	PLEXIGLAS, CLEAR LCD	1	2	025-28966-016
18	RIBBON - 26 COND'S. P11 & P12	2	2	025-28966-017
19	RIBBON - 4 COND'S. P15	2	1	025-28966-018
20	SWITCH, EMERGENCY STOP	1	1	025-28966-019
21	BLOCK, CONTACT	1	1	025-28966-020
22	METER, ELAPSED TIME	1, 2	1	025-28966-021
23	GASKET, METER	1, 2	1	025-28966-022
24	ALARM, LIGHT BASE	1, 2	1	025-28966-023
25	SWITCH, SELECTOR, 3 POSITION	1, 2	1	025-28966-024
26	BLOCK, CONTACT	1, 2	1	025-28966-025
27	BLOCK, CONTACT	1, 2	1	025-28966-026
28	RELAY, CONTROL, 1CR, 2CR, 3CR	2	3	025-28966-027
29	BASE, CONTROL RELAY	2	3	025-28966-028
30	SUPPRESSOR		6	025-28966-029
31	TOOL KIT FOR WORKING ON CONTROL			025-28966-030



DOOR OPEN



VIEW INSIDE OF DOOR

FIG. 2 – MICROCOMPUTER CONTROL CENTER

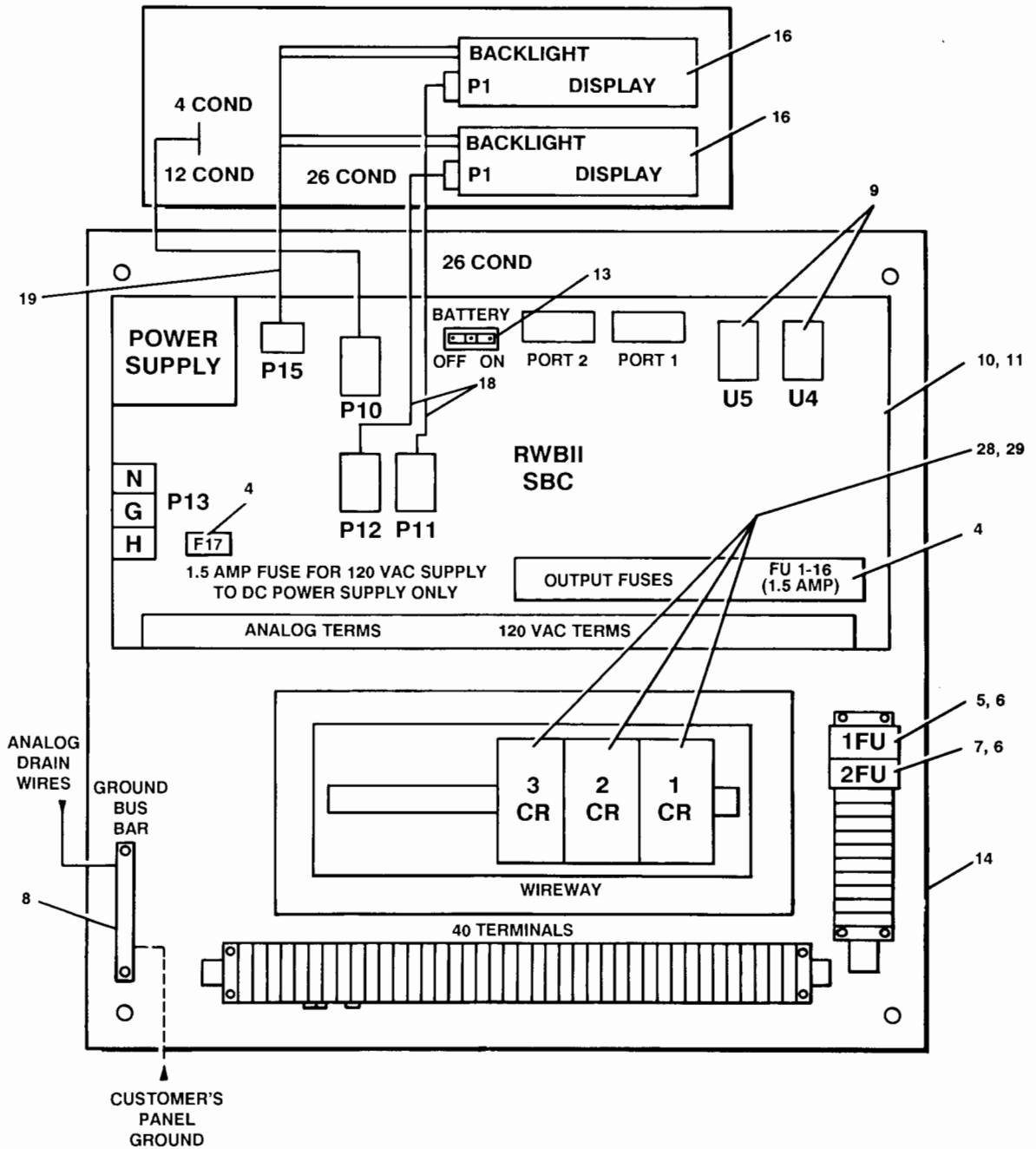


FIG. 2 – MICROCOMPUTER CONTROL CENTER

